

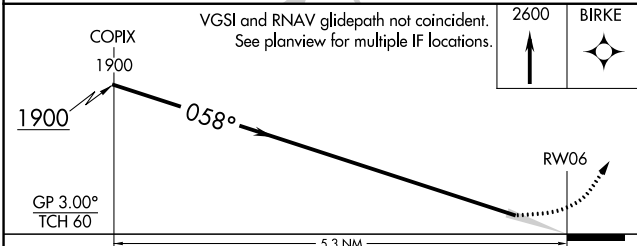
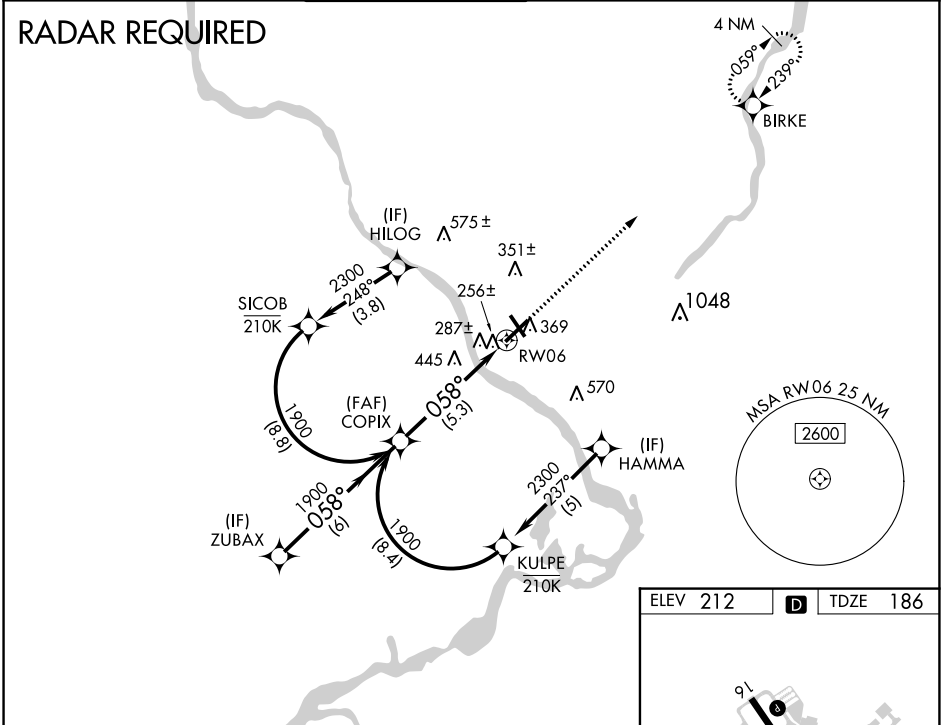
APP CRS	Rwy Idg	6006
058°	TDZE	186
	Apt Elev	212

RNAV (RNP) Y RWY 6

TRENTON MERCER (TTN)

<p>▽ For uncompensated Baro-VNAV systems, procedure NA below -13°C (8°F) or above 54°C (130°F). GPS required.</p> <p>For inoperative MALSR, increase RNP 0.10 DA all Cats visibility to 1 mile, increase RNP 0.30 DA all Cats visibility to 1½ mile.</p>	<p>MALSR</p>	<p>MISSED APPROACH: Climb to 2600 direct BIRKE and hold.</p>

ATIS	PHILADELPHIA	APP CON	TRENTON TOWER *	GND CON	CLNC DEL	UNICOM
126.775	123.8	291.7	120.7 (CTAF) 0 257.8	121.9 257.8	121.9 257.8	122.95



ELEV 212	D	TDZE 186
----------	----------	----------

HIRL Rwy 6-24 and 16-34 **⬆**
REIL Rwy 16, 24 and 34 **⬆**

CATEGORY	A	B	C	D
RNP 0.10 DA		510-½	324 (300-½)	
RNP 0.30 DA		668-1½	482 (500-1½)	

AUTHORIZATION REQUIRED

NE-2, 13 JUN 2024 to 11 JUL 2024

NE-2, 13 JUN 2024 to 11 JUL 2024