

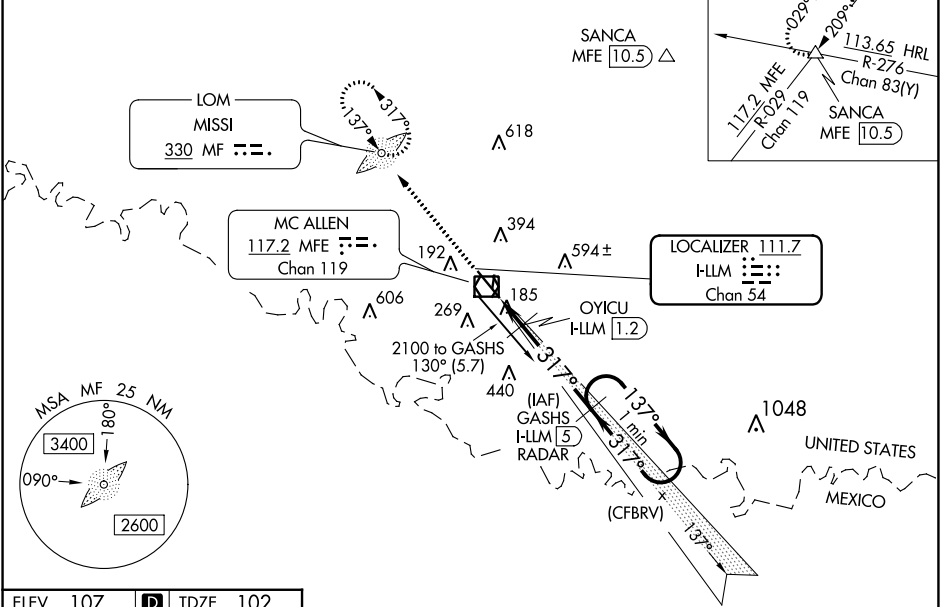
LOC/DME I-LLM 111.7 Chan 54	APP CRS 317°	Rwy Idg 7120 TDZE 102 Apt Elev 107
---	------------------------	---

ILS or LOC RWY 32

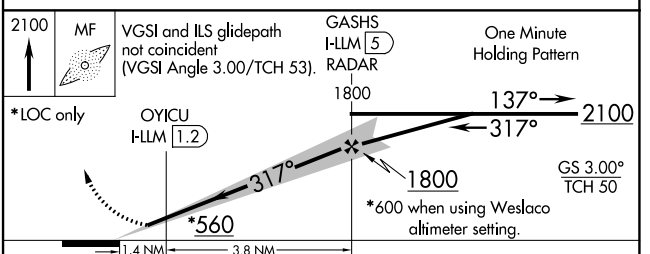
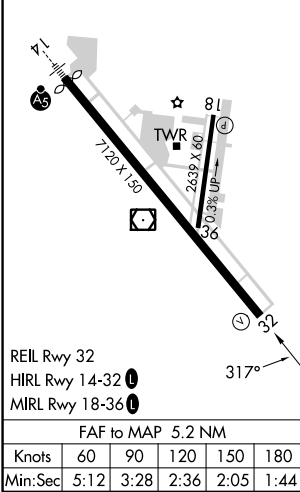
MC ALLEN INTL (MF'E)

<p>⚠ Circling NA northeast of Rwy 14-32. ADF and DME or Radar required. When local altimeter setting not received, use Weslaco altimeter setting: increase all DA 39 feet and MDA 40 feet.</p>			<p>MISSED APPROACH: Climb to 2100 direct MF LOM and hold</p>	
<p>ATIS 128.5</p>	<p>VALLEY APP CON 126.55 377.2</p>	<p>MC ALLEN TOWER ★ 118.5 (CTAF) 0 256.9</p>	<p>GND CON 121.8</p>	<p>UNICOM 122.95</p>

DME or RADAR REQUIRED



ELEV 107	D	TDZE 102
----------	----------	----------



CATEGORY	A	B	C	D
S-ILS 32	302- ³ / ₄		200 (200- ³ / ₄)	
S-LOC 32	560-1	458 (500-1)	560- ¹ / ₈	458 (500- ¹ / ₈)
C CIRCLING	580-1	473 (500-1)	580- ¹ / ₂ 473 (500- ¹ / ₂)	800- ² / ₄ 693 (700- ² / ₄)
OYICU FIX MINIMUMS				
S-LOC 32	440-1		338 (400-1)	
C CIRCLING	580-1	473 (500-1)	580- ¹ / ₂ 473 (500- ¹ / ₂)	800- ² / ₄ 693 (700- ² / ₄)

SC-3, 13 JUN 2024 to 11 JUL 2024

SC-3, 13 JUN 2024 to 11 JUL 2024