

VOR/DME MFE 117.2 Chan 119	APP CRS 134°	Rwy Idg 6983 TDZE 107 Apt Elev 107
------------------------------------------------	------------------------	---------------------------------------------------------------

VOR RWY 14

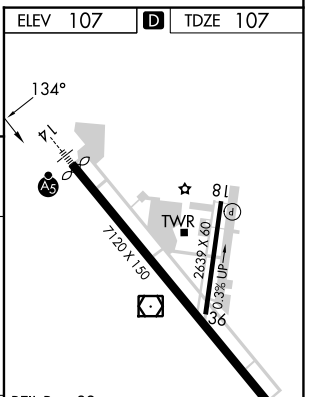
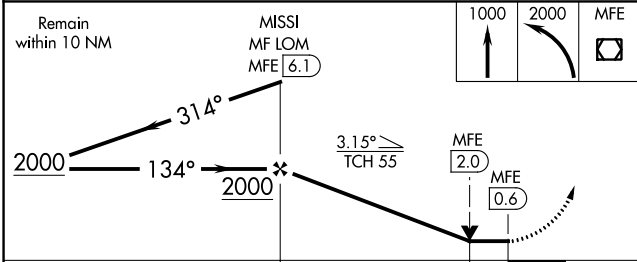
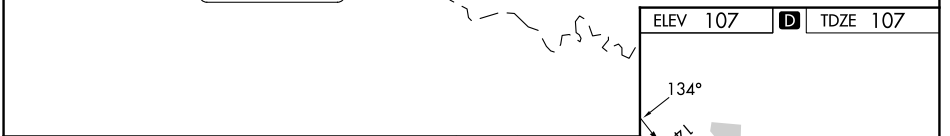
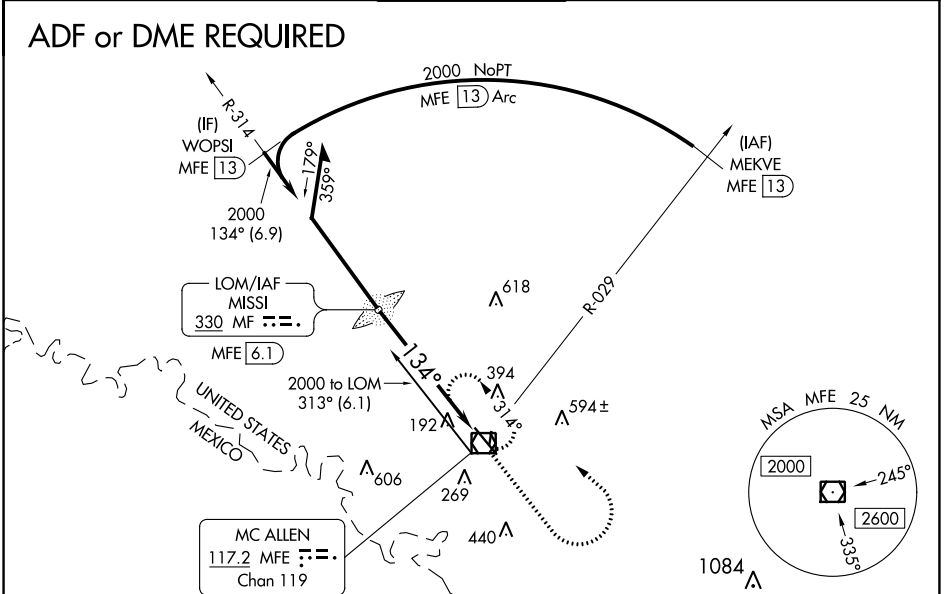
MC ALLEN INTL (MFE)

⚠ Circling NA northeast of Rwy 14-32. ADF or DME required. For nop MALSR, increase S-14 Cat C/D visibility to 1 1/8 mile. When local altimeter setting not received, use Weslaco altimeter setting and increase all MDA 40 feet and S-14 Cat C/D and Circling Cat C visibility 1/8 mile. VDP NA when using Weslaco altimeter setting.

MALSR

MISSED APPROACH: Climb to 1000 then climbing left turn to 2000 direct MFE VOR/DME and hold.

ATIS 128.5	VALLEY APP CON 126.55 377.2	MC ALLEN TOWER ★ 118.5 (CTAF) 256.9	GND CON 121.8	UNICOM 122.95
----------------------	---------------------------------------	------------------------------------------------------	-------------------------	-------------------------



CATEGORY	A	B	C	D
S-14	620-1/2 513 (600-1/2)		620-1 513 (600-1)	
C CIRCLING	620-1 513 (600-1)		620-1 1/2 513 (600-1/2)	800-2 1/4 693 (700-2 1/4)

FAF to MAP 5.5 NM					
Knots	60	90	120	150	180
Min:Sec	5:30	3:40	2:45	2:12	1:50

SC-3, 13 JUN 2024 to 11 JUL 2024

SC-3, 13 JUN 2024 to 11 JUL 2024