


LOC I-SBP 109.7	APP CRS 110°	Rwy ldg 5300 TDZE 198 Apt Elev 212
---------------------------	------------------------	---

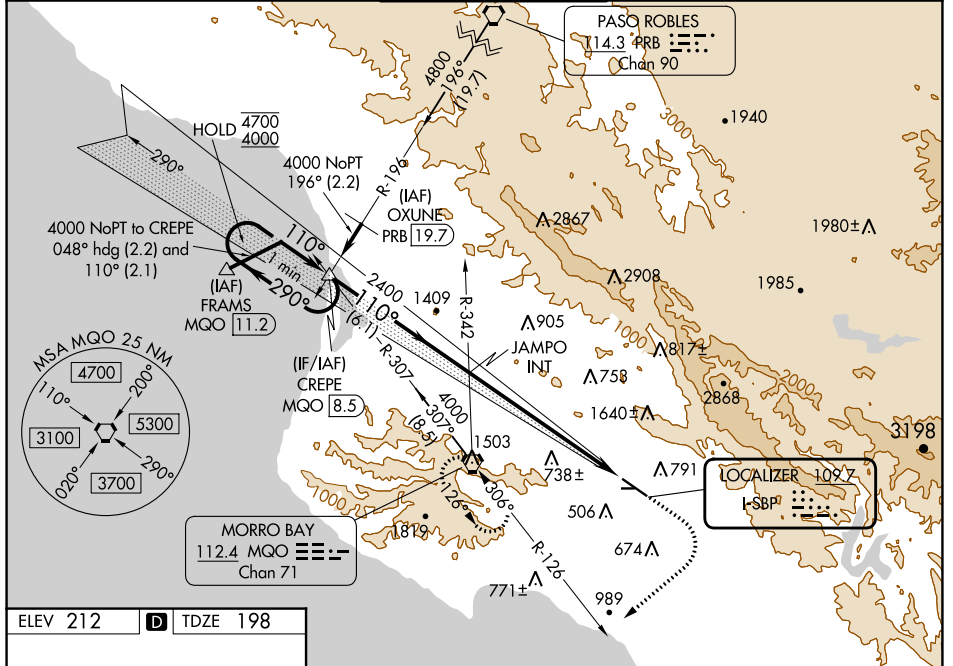
ILS or LOC RWY 11
SAN LUIS OBISPO COUNTY RGNL (SBP)

⚠ Circling Rwy 25 NA at night. Circling NA north of Rwy 11-29. Autopilot coupled approach NA below 677. For inop ALS, increase S-ILS 11 all Cats visibility to ¾ SM, S-LOC 11 Cat A visibility to 1¼ SM, Cat B visibility to 1½ SM.



MALSR 

MISSED APPROACH: Climb to 1000 then climbing right turn to 3300 on heading 215° and MQO VORTAC R-126 to MQO VORTAC and hold, continue climb-in-hold to 3300. S-ILS 11* missed approach requires minimum climb of 210 feet per NM to 1160.

ATIS* 120.6	SANTA BARBARA APP CON* 127.725 244.575	SAN LUIS TOWER* 124.0 (CTAF) 0 379.9	GND CON 121.6	UNICOM 122.95
-----------------------	--	--	-------------------------	-------------------------




ELEV 212	D	TDZE 198
----------	----------	----------

REIL Rwy 29 
HIRL Rwy 11-29 

FAF to MAP 6.9 NM

Knots	60	90	120	150	180
Min:Sec	6:54	4:36	3:27	2:46	2:18

	CREPE MQO [8.5]	1000	3300	MQO	MQO
	One Minute Holding Pattern			MQO R-126	
	4700 ← 290°	4000 → 110°	→ 110°	2400	
	GS 3.00°	TCH 49		6.1 NM	6.9 NM
CATEGORY	A	B	C	D	
S-ILS 11*	398-½		200 (200-½)		
S-ILS 11	495-½		297 (300-½)		
S-LOC 11	1420-¾ 1222 (1300-¾)	1420-1 1222 (1300-1)	1420-3	1222 (1300-3)	
CIRCLING	1420-1¼ 1208 (1300-1¼)	1420-1½ 1208 (1300-1½)	1500-3	1760-3	

SW-3, 13 JUN 2024 to 11 JUL 2024

SW-3, 13 JUN 2024 to 11 JUL 2024