

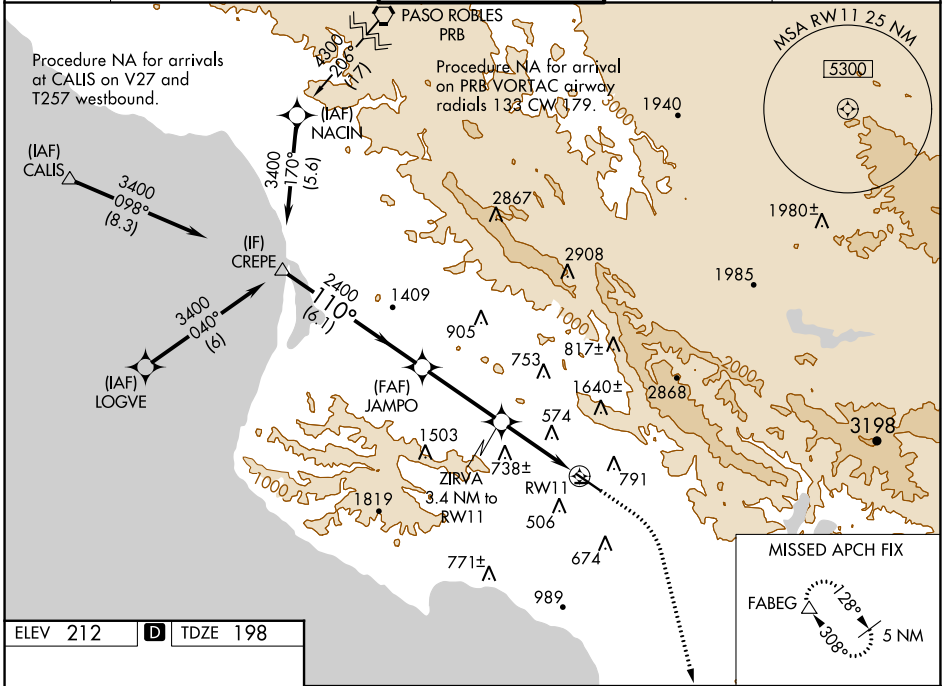
WAAS CH 50328 W11A	APP CRS 110°	Rwy Idg TDZE Apt Elev	5300 198 212
--	------------------------	-----------------------------	---

RNAV (GPS) RWY 11

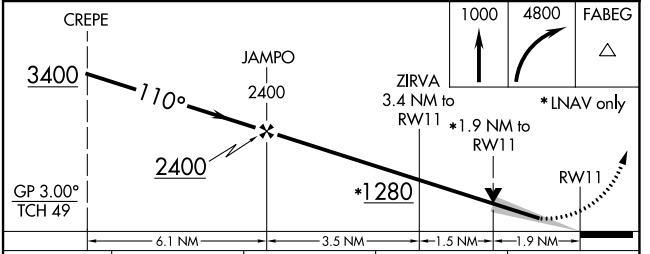
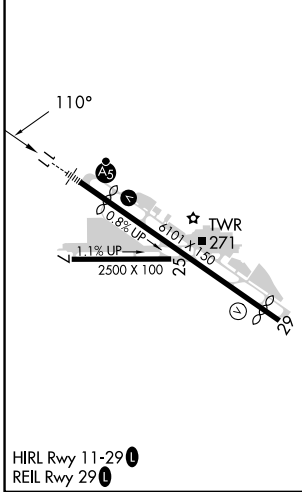
SAN LUIS OBISPO COUNTY RGNL (SBP)

RNP APCH. ▼ ▲ Circling NA north of Rwy 11-29. Circling Rwy 25 NA at night. For uncompensated Baro-VNAV systems, LNAV/VNAV NA below 0°C or above 54°C. For inop ALS, increase LNAV/VNAV all Cats visibility to 2 SM.	MALSR AS 	MISSED APPROACH: Climb to 1000 then climbing right turn to 4800 direct FABEG and hold, continue climb-in-hold to 4800.
--	-----------------	--

ATIS* 120.6	SANTA BARBARA APP CON* 127.725 244.575	SAN LUIS TOWER* 124.0 (CTAF) 0 379.9	GND CON 121.6	UNICOM 122.95
-----------------------	--	--	-------------------------	-------------------------



ELEV 212	D	TDZE 198
----------	----------	----------



CATEGORY	A	B	C	D
LPV DA		398-1/2	200 (200-1/2)	
LNAV/VNAV DA		946-1 3/4	748 (800-1 3/4)	
LNAV MDA	840-1/2	642 (700-1/2)	840-1 3/8	642 (700-1 3/8)
C CIRCLING	840-1 628 (700-1)	1220-1 1/2 1008 (1100-1 1/2)	1460-3 1248 (1300-3)	1560-3 1348 (1400-3)

SW-3, 13 JUN 2024 to 11 JUL 2024

SW-3, 13 JUN 2024 to 11 JUL 2024