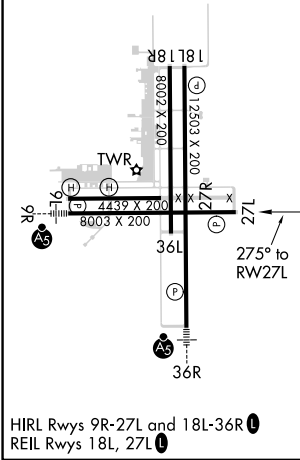
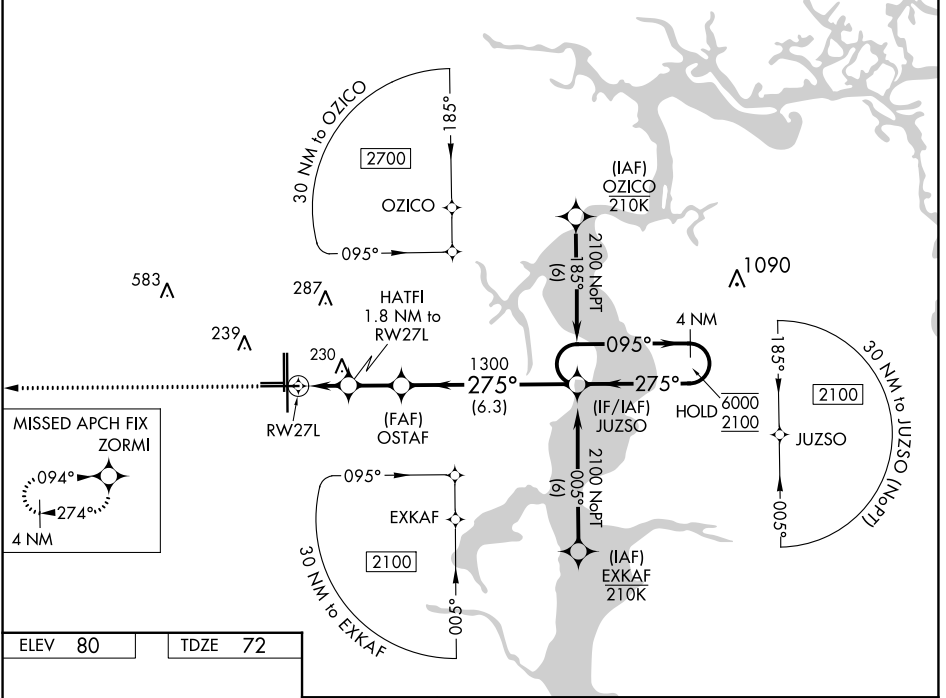


WAAS CH 97716 W27A	APP CRS 275°	Rwy Idg TDZE Apt Elev	8003 72 80
--	------------------------	-----------------------------	---------------------------------------

RNAV (GPS) RWY 27L

CECIL (VQQ)

RNP APCH.		CECIL TOWER★		GND CON		CLNC DEL		GCO	
Rwy 27L helicopter visibility reduction below 3/4 SM NA. For uncompensated Baro-VNAV systems, LNAV/VNAV NA below -1.5°C or above 54°C.		126.1 (CTAF) 0 235.625		121.625 226.675		123.975 254.25		135.075	
ATIS	JACKSONVILLE APP CON	CECIL TOWER★		GND CON		CLNC DEL		GCO	
125.275	127.775 377.075	126.1 (CTAF) 0 235.625		121.625 226.675		123.975 254.25		135.075	



ELEV 80	TDZE 72	ZORMI VGSi and RNAV glidepath not coincident (VGSi 3.00 Angle/TCH 67).		JUZSO 4 NM Holding Pattern
HATFI 1.8 NM to RWY 27L		OSTAF 1300		JUZSO 6000 / 2100
RWY 27L *1 NM to RWY 27L		680*		1300
1 NM		0.8 NM		1.9 NM
6.3 NM		275°		095° / 275°
1 NM		0.8 NM		1.9 NM
6.3 NM		275°		095° / 275°
1 NM		0.8 NM		1.9 NM
6.3 NM		275°		095° / 275°
1 NM		0.8 NM		1.9 NM
6.3 NM		275°		095° / 275°
1 NM		0.8 NM		1.9 NM
6.3 NM		275°		095° / 275°
1 NM		0.8 NM		1.9 NM
6.3 NM		275°		095° / 275°
1 NM		0.8 NM		1.9 NM
6.3 NM		275°		095° / 275°
1 NM		0.8 NM		1.9 NM
6.3 NM		275°		095° / 275°
1 NM		0.8 NM		1.9 NM
6.3 NM		275°		095° / 275°
1 NM		0.8 NM		1.9 NM
6.3 NM		275°		095° / 275°
1 NM		0.8 NM		1.9 NM
6.3 NM		275°		095° / 275°
1 NM		0.8 NM		1.9 NM
6.3 NM		275°		095° / 275°
1 NM		0.8 NM		1.9 NM
6.3 NM		275°		095° / 275°
1 NM		0.8 NM		1.9 NM
6.3 NM		275°		095° / 275°
1 NM		0.8 NM		1.9 NM
6.3 NM		275°		095° / 275°
1 NM		0.8 NM		1.9 NM
6.3 NM		275°		095° / 275°
1 NM		0.8 NM		1.9 NM
6.3 NM		275°		095° / 275°
1 NM		0.8 NM		1.9 NM
6.3 NM		275°		095° / 275°
1 NM		0.8 NM		1.9 NM
6.3 NM		275°		095° / 275°
1 NM		0.8 NM		1.9 NM
6.3 NM		275°		095° / 275°
1 NM		0.8 NM		1.9 NM
6.3 NM		275°		095° / 275°
1 NM		0.8 NM		1.9 NM
6.3 NM		275°		095° / 275°
1 NM		0.8 NM		1.9 NM
6.3 NM		275°		095° / 275°
1 NM		0.8 NM		1.9 NM
6.3 NM		275°		095° / 275°
1 NM		0.8 NM		1.9 NM
6.3 NM		275°		095° / 275°
1 NM		0.8 NM		1.9 NM
6.3 NM		275°		095° / 275°
1 NM		0.8 NM		1.9 NM
6.3 NM		275°		095° / 275°
1 NM		0.8 NM		1.9 NM
6.3 NM		275°		095° / 275°
1 NM		0.8 NM		1.9 NM
6.3 NM		275°		095° / 275°
1 NM		0.8 NM		1.9 NM
6.3 NM		275°		095° / 275°
1 NM		0.8 NM		1.9 NM
6.3 NM		275°		095° / 275°
1 NM		0.8 NM		1.9 NM
6.3 NM		275°		095° / 275°
1 NM		0.8 NM		1.9 NM
6.3 NM		275°		095° / 275°
1 NM		0.8 NM		1.9 NM
6.3 NM		275°		095° / 275°
1 NM		0.8 NM		1.9 NM
6.3 NM		275°		095° / 275°
1 NM		0.8 NM		1.9 NM
6.3 NM		275°		095° / 275°
1 NM		0.8 NM		1.9 NM
6.3 NM		275°		095° / 275°
1 NM		0.8 NM		1.9 NM
6.3 NM		275°		095° / 275°
1 NM		0.8 NM		1.9 NM
6.3 NM		275°		095° / 275°
1 NM		0.8 NM		1.9 NM
6.3 NM		275°		095° / 275°
1 NM		0.8 NM		1.9 NM
6.3 NM		275°		095° / 275°
1 NM		0.8 NM		1.9 NM
6.3 NM		275°		095° / 275°
1 NM		0.8 NM		1.9 NM
6.3 NM		275°		095° / 275°
1 NM		0.8 NM		1.9 NM
6.3 NM		275°		095° / 275°
1 NM		0.8 NM		1.9 NM
6.3 NM		275°		095° / 275°
1 NM		0.8 NM		1.9 NM
6.3 NM		275°		095° / 275°
1 NM		0.8 NM		1.9 NM
6.3 NM		275°		095° / 275°
1 NM		0.8 NM		1.9 NM
6.3 NM		275°		095° / 275°
1 NM		0.8 NM		1.9 NM
6.3 NM		275°		095° / 275°
1 NM		0.8 NM		1.9 NM
6.3 NM		275°		095° / 275°
1 NM		0.8 NM		1.9 NM
6.3 NM		275°		095° / 275°
1 NM		0.8 NM		1.9 NM
6.3 NM		275°		095° / 275°
1 NM		0.8 NM		1.9 NM
6.3 NM		275°		095° / 275°
1 NM		0.8 NM		1.9 NM
6.3 NM		275°		095° / 275°
1 NM		0.8 NM		1.9 NM
6.3 NM		275°		095° / 275°
1 NM		0.8 NM		1.9 NM
6.3 NM		275°		095° / 275°
1 NM		0.8 NM		1.9 NM
6.3 NM		275°		095° / 275°</