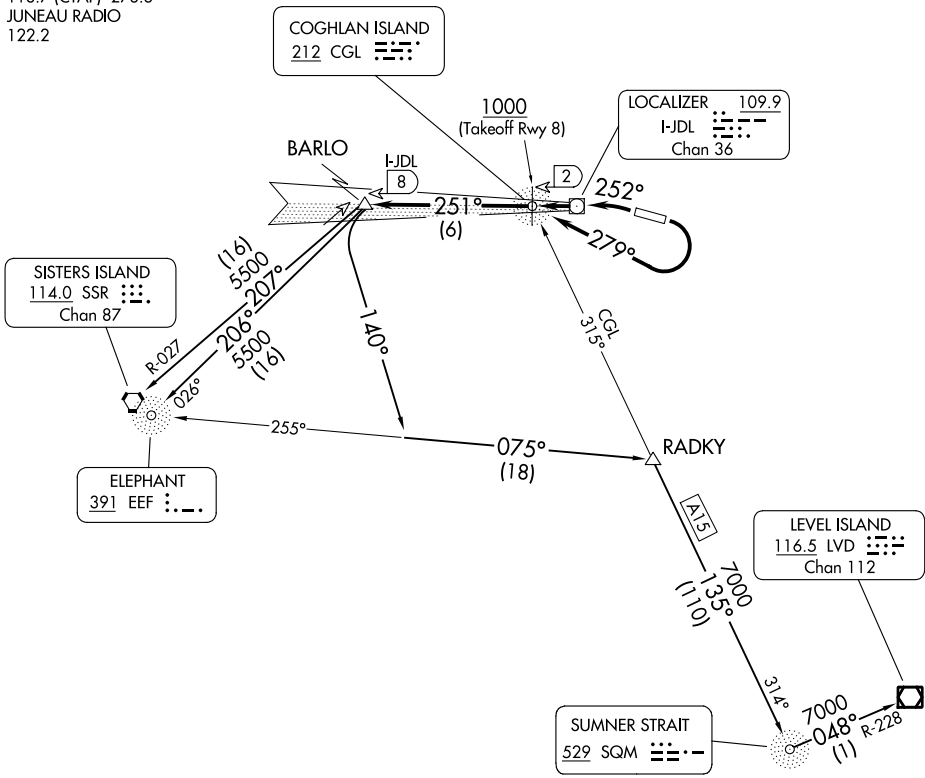


# JUNEAU SIX DEPARTURE (OBSTACLE)

AL-1191 (FAA)

ANCHORAGE CENTER  
133.9  
ATIS  
135.2  
GND CON  
121.9  
JUNEAU TOWER ★  
118.7 (CTAF) 278.3  
JUNEAU RADIO  
122.2



### TAKEOFF MINIMUMS

Rwy 8: 1000-3 with minimum climb from 1000 as stated per transition.  
Rwy 26: 600-2 or standard with minimum climb of 595' per NM to 800, then as stated per transition.

- NOTE: SISTERS ISLAND and ELEPHANT Transitions: Minimum climb of 330' per NM to 2800.
- NOTE: LEVEL ISLAND and SUMNER STRAIT Transitions: Minimum climb of 385' per NM to 4600'.
- NOTE: ADF required.
- NOTE: Obtain ATC approval for this procedure if not issued as part of the IFR clearance.
- CAUTION: Rapidly rising terrain to 3000' MSL north, south and east of airport.

NOTE: Chart not to scale.

(CONTINUED ON FOLLOWING PAGE)

# JUNEAU SIX DEPARTURE (OBSTACLE)

AK, 16 MAY 2024 to 11 JUL 2024

AK, 16 MAY 2024 to 11 JUL 2024