

APP CRS	Rwy Idg	<b>8457</b>
<b>070°</b>	TDZE	<b>25</b>
	Apt Elev	<b>25</b>

# RNAV (GPS) V RWY 8

JUNEAU INTL (JNU)(PAJN)

RNP APCH - GPS.

**⚠** Circling NA at night. Rwy 8 helicopter visibility reduction below 1 SM NA. When Juneau altimeter setting not received, procedure NA.

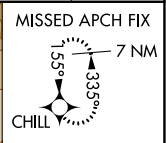
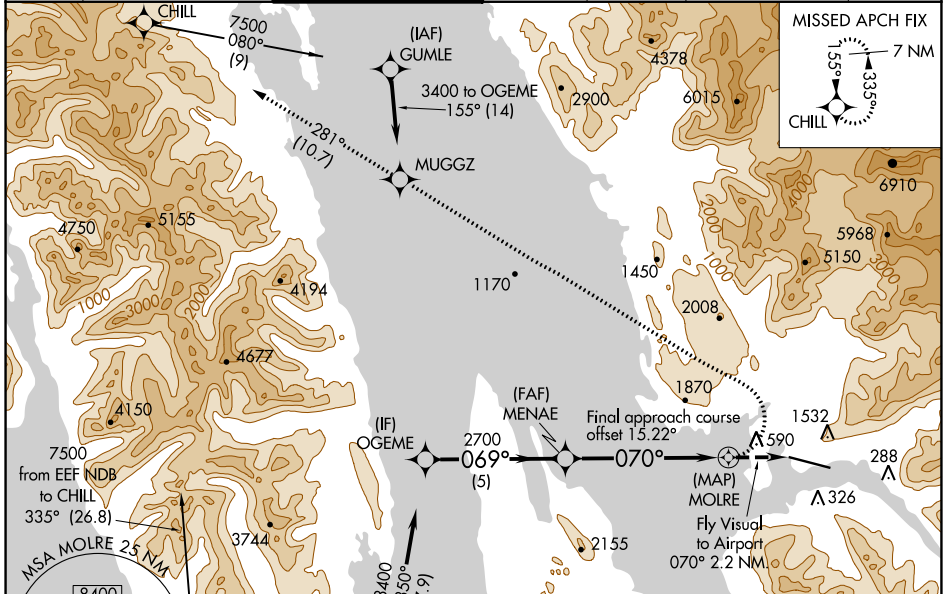
**❄** -0°C When VGSI inop, procedure NA at night. Lead-in lights not aligned with final approach course. For inop Lead-in lights, increase visibility to 4 SM. Circling NA north of Rwy 8-26.

**MALSF**

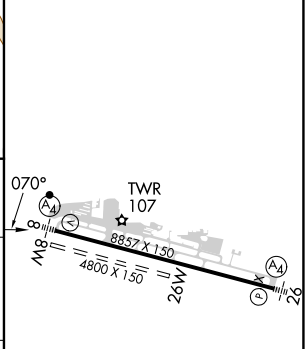
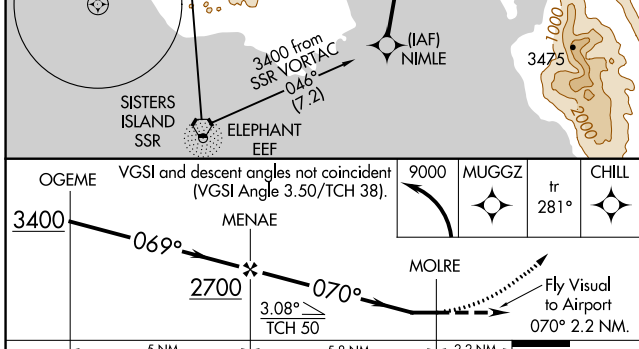
**Ⓜ**

**MISSED APPROACH:** Climbing left turn to 9000 direct MUGGZ and on 281° track to CHILL and hold, continue climb-in-hold to 9000. \*Missed approach requires minimum climb of 363 feet per NM to 3200.

ATIS	ANCHORAGE CENTER	JUNEAU TOWER*	GND CON	CLNC DEL	JUNEAU RADIO	UNICOM
<b>135.2</b>	<b>133.9</b>	<b>118.7 (CTAF) 278.3</b>	<b>121.9</b>	<b>121.9</b>	<b>122.2</b>	<b>122.95</b>



ELEV 25	<b>D</b> TDZE 25
---------	------------------



CATEGORY	A	B	C	D
LNAV MDA*	1880-2	1855 (1900-2)		NA
LNAV MDA	2340-3	2315 (2400-3)		NA
<b>C</b> CIRCLING	2340-3	2315 (2400-3)		NA

RLS Rwy 8  
REIL Rwy 8 and 26  
HIRL Rwy 8-26

AK, 16 MAY 2024 to 11 JUL 2024

AK, 16 MAY 2024 to 11 JUL 2024