

VORTAC SSR 114.0 Chan 87	APP CRS 297°	Rwy Idg 6720 TDZE 31 Apt Elev 35
--	------------------------	--

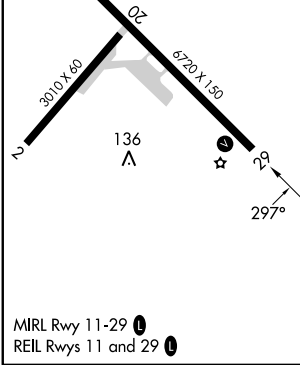
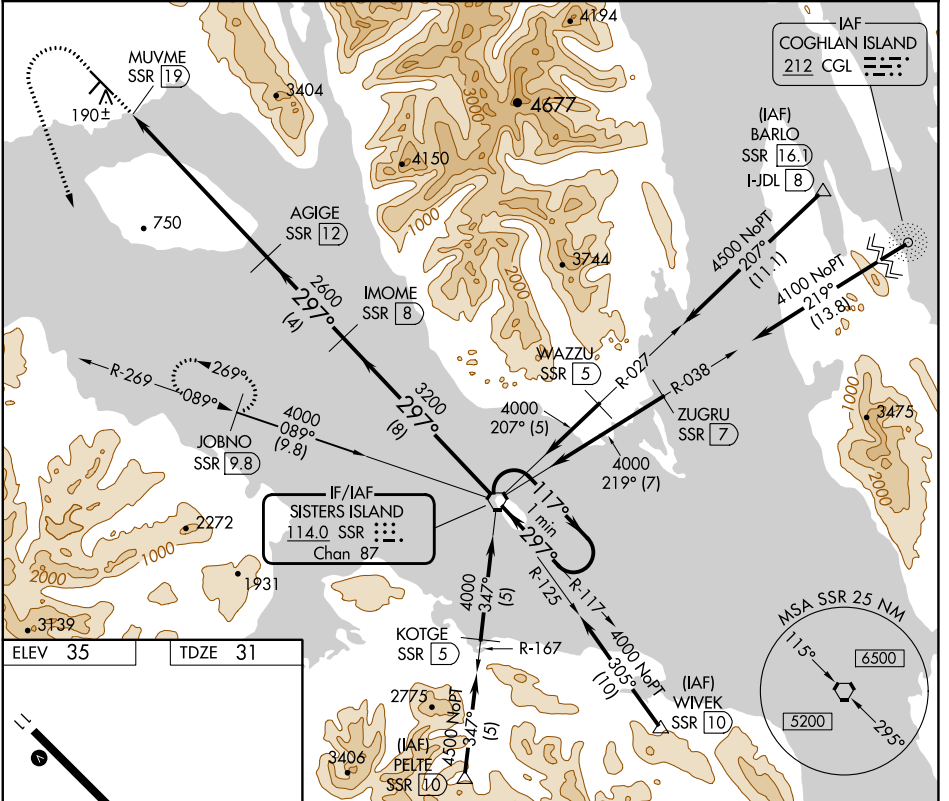
VOR/DME RWY 29

GUSTAVUS (GST)(PAGS)

⚠ Circling NA northeast of Rwy 11-29.
❄ -18°C When local altimeter setting not received, procedure NA.

MISSED APPROACH: Climb to 2000 then climbing left turn to 4000 on heading 140° and on SSR VORTAC R-269 to JOBNO/9.8 DME and hold.

AWOS-3P 125.9	ANCHORAGE CENTER 133.2 360.65	JUNEAU RADIO 122.65	CTAF 122.5
-------------------------	---	-------------------------------	----------------------



2000 4000 hdg 140° SSR R-269 JOBNO VGSJ and descent angles not coincident (VGSJ Angle 3.00/TCH 39). SSR VORTAC One Minute Holding Pattern	IMOME SSR [8]	117° → 4000	
	MUVME SSR [19] ≤ 2.96° TCH 55 AGIGE SSR [12]	297° ← 4000 3200 2600	117° → 4000 297° ← 4000
1 NM 7 NM 4 NM 8 NM			
CATEGORY S-29 CIRCLING	A 1260-1¼ 1229 (1300-1¼) 1260-1¼ 1225 (1300-1¼)	B 1260-1½ 1229 (1300-1½) 1260-1½ 1225 (1300-1½)	C 1260-3 1229 (1300-3) 1260-3 1225 (1300-3)

AK, 16 MAY 2024 to 11 JUL 2024

AK, 16 MAY 2024 to 11 JUL 2024