

WAAS CH <b>82031</b> <b>W27A</b>	APP CRS <b>275°</b>	Rwy Idg TDZE Apt Elev	<b>7500</b> <b>53</b> <b>53</b>
--	------------------------	-----------------------------	---------------------------------------

# RNAV (GPS) RWY 27

MERLE K (MUDHOLE) SMITH (CDV)(PACV)

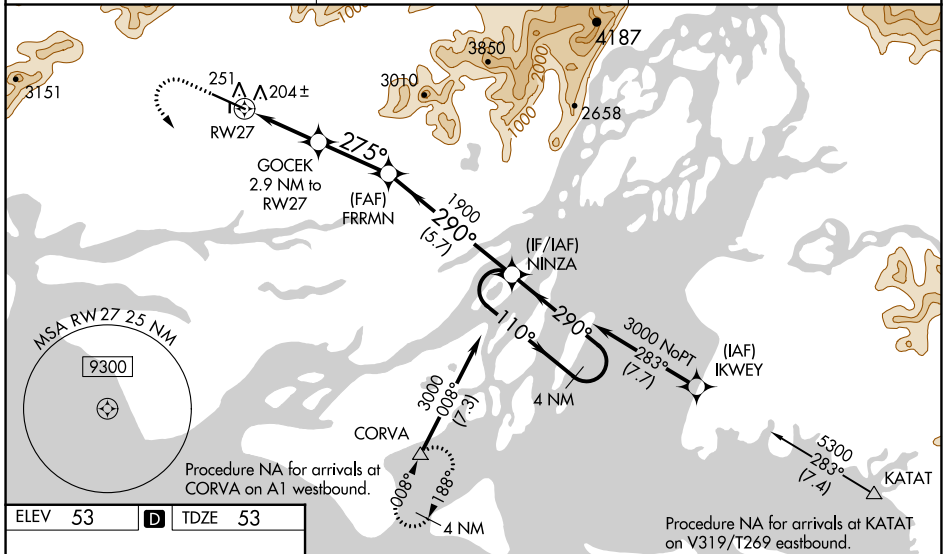
RNP APCH-GPS.

Baro-VNAV NA. VDP NA with Valdez altimeter setting. For inoperative MALSR, increase LPV all Cats visibility to RVR 4500, LNAV/VNAV all Cats visibility to 1½, LNAV Cats A/B visibility to RVR 5500, Cats C/D visibility to RVR 6000. When local altimeter setting not received use Valdez altimeter setting and increase all DA 113 feet and all MDA 120 feet, and increase LPV all Cats visibility to RVR 4000, increase LNAV/VNAV all Cats visibility to 1½, increase LNAV Cats C/D visibility to RVR 5500. For inoperative MALSR when using Valdez altimeter setting, increase LPV all Cats visibility to RVR 6000, LNAV Cats A/B visibility to RVR 5500, and LNAV Cats C/D visibility to 1½. Circling to Rwy 16/34 NA at night. Circling NA north of Rwy 9/27.

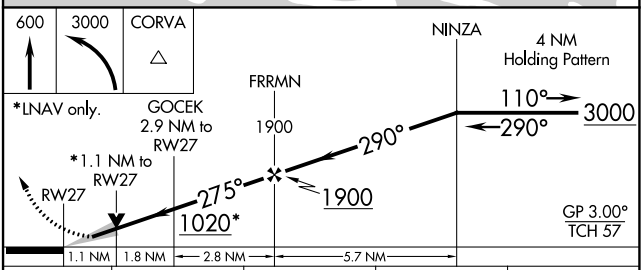
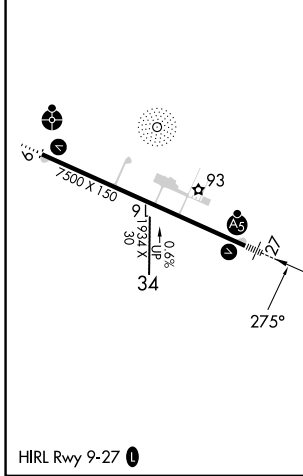
MALSR

MISSED APPROACH: Climb to 600 then climbing left turn to 3000 direct CORVA and hold.

ASOS <b>134.8</b>	ANCHORAGE CENTER <b>119.3 133.6 269.4</b>	JUNEAU RADIO <b>122.2 123.6 (CTAF)</b>
----------------------	--	---



ELEV 53	<b>D</b>	TDZE 53
---------	----------	---------



CATEGORY	A	B	C	D
LPV DA		328/24	275 (300-½)	
LNAV/VNAV DA		523/56	470 (500-1¼)	
LNAV MDA	460/24	407 (500-½)	460/40	407 (500-¾)
CIRCLING	480-1 427 (500-1)	520-1 467 (500-1)	520-1½ 467 (500-1½)	1540-3 1487 (1500-3)

AK, 16 MAY 2024 to 11 JUL 2024

AK, 16 MAY 2024 to 11 JUL 2024