

LOC/DME I-MCG 108.5 Chan 22	APP CRS 162°	Rwy Idg TDZE Apt Elev	4843 343 343
---	------------------------	-----------------------------	---

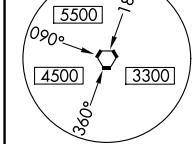
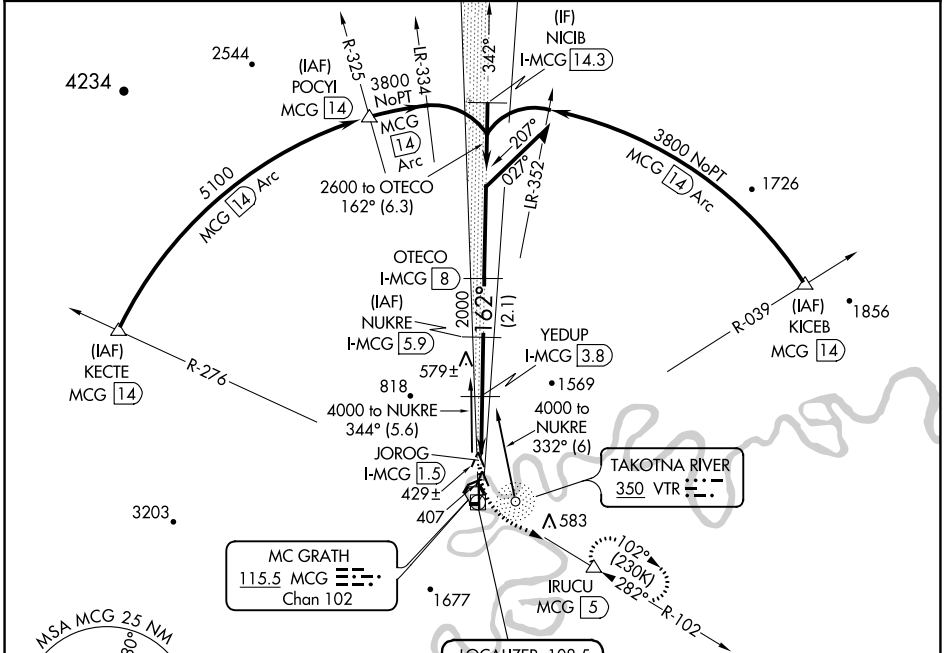
LOC/DME RWY 16

MC GRATH (MCG)(PAMC)

MISSED APPROACH: Climb to 1000 then climbing left turn to 4000 via MCG VORTAC R-102 to IRUCU/MCG 5 DME and hold, continue climb-in-hold to 4000.

Warning: Circling NA for Cat D west of Rwy 16-34.
-46°C

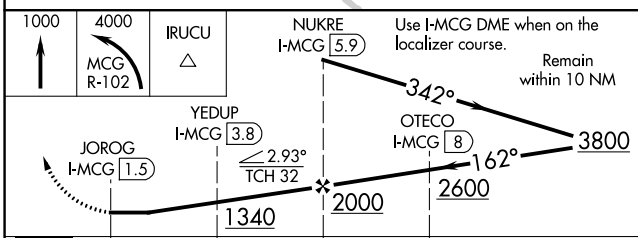
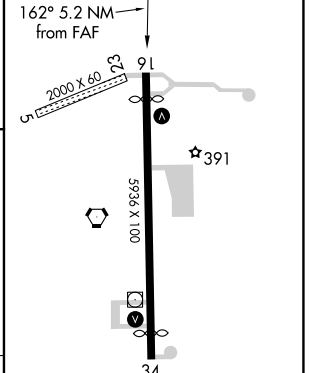
ASOS 135.65	ANCHORAGE CENTER 128.1 353.8	MCGRATH RADIO 123.6 (CTAF)
-----------------------	--	--------------------------------------



MC GRATH
115.5 MCG
Chan 102

LOCALIZER 108.5
I-MCG
Chan 22
LOC offset 2.51°

ELEV 343	D	TDZE 343
----------	----------	----------



CATEGORY	A	B	C	D
S-16	760-1	417 (500-1)	760-1¼	417 (500-1¼)
CIRCLING	820-1 477 (500-1)	840-1 497 (500-1)	1460-3 1117 (1200-3)	1620-3 1277 (1300-3)

MIRL Rwy 5-23 and 16-34
REIL Rwy 16 and 34

AK, 16 MAY 2024 to 11 JUL 2024

AK, 16 MAY 2024 to 11 JUL 2024