

WAAS CH <b>45927</b> <b>W28A</b>	APP CRS <b>279°</b>	Rwy Idg TDZE <b>25</b> Apt Elev <b>41</b>	<b>6009</b>
--	------------------------	---	-------------

# RNAV (GPS) RWY 28

NOME (OME)(PAOM)

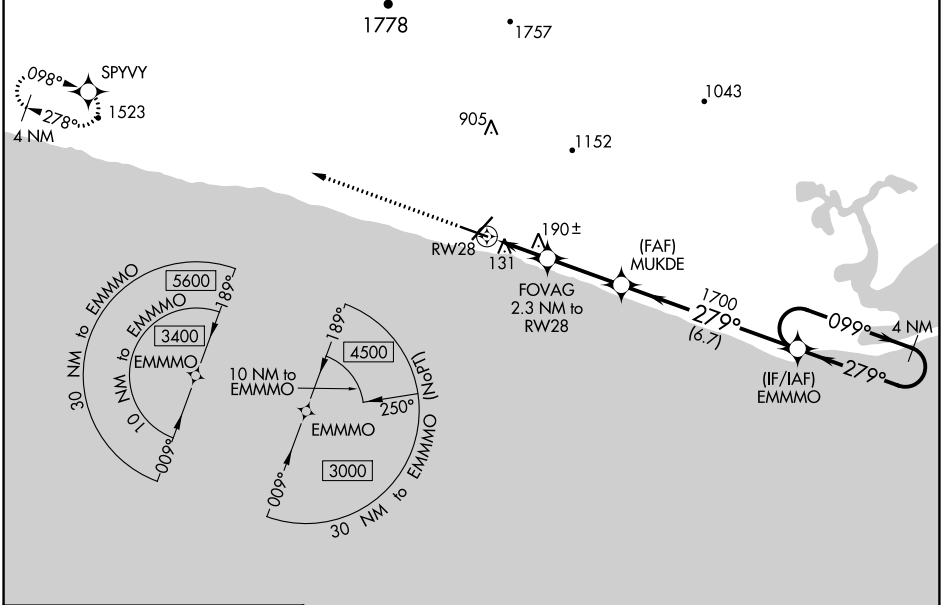
RNP APCH - GPS.

⚠ Inop table does not apply to LPV 28 all Cats. For uncompensated Baro-VNAV systems, LNAV/VNAV NA below -18°C or above 54°C. Circling NA for Cats C and D north of Rwy 10-28. NA. Rwy 28 helicopter visibility reduction below 4000 NA. Circling Rwy 21 NA at night.

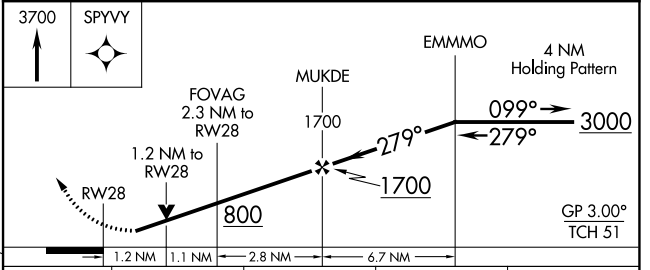
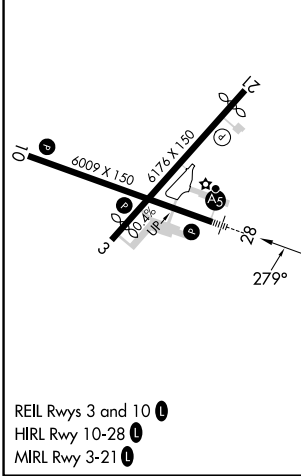
MALSRL  
AS

MISSED APPROACH: Climb to 3700 direct SPYVY and hold, continue climb-in-hold to 3700.

AFIS <b>119.925</b>	ANCHORAGE CENTER <b>133.3 290.4</b>	NOME RADIO <b>123.6 (CTAF) 1</b>
------------------------	--	-------------------------------------



ELEV 41	<b>D</b>	TDZE 25
---------	----------	---------



CATEGORY	A	B	C	D
LPV DA		275/40	250 (300-¾)	
LNAV/VNAV DA		301/40	276 (300-¾)	
LNAV MDA		440/40	415 (400-¾)	
<b>C</b> CIRCLING	540-1	499 (500-1)	540-1½ 499 (500-1½)	700-2 659 (700-2)

AK, 16 MAY 2024 to 11 JUL 2024

AK, 16 MAY 2024 to 11 JUL 2024