

VOR/DME OME 115.0 Chan 97	APP CRS 276°	Rwy Idg 6009 TDZE 25 Apt Elev 41
---	------------------------	---

VOR RWY 28

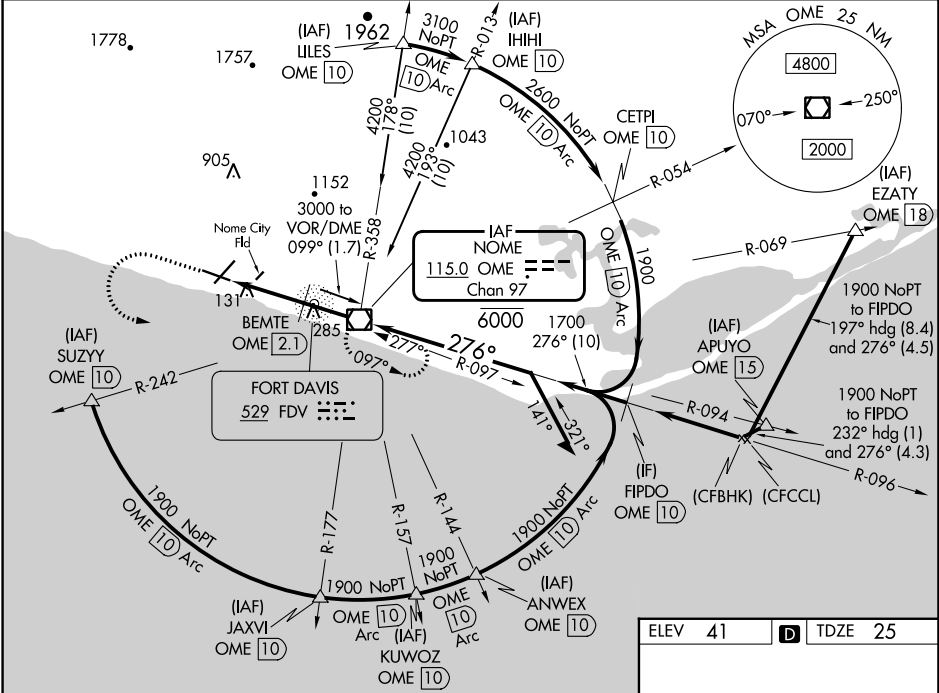
NOME (OME)(PAOM)

⚠ For inop ALS, increase S-28 BEMTE fix minimums Cat A/B visibility to RVR 5000, increase Cat C/D visibility to 1 3/8 SM. Circling NA for Cats C and D north of Rwy 10-28. Circling Rwy 21 NA at night. Rwy 28 helicopter visibility reduction below RVR 4000 NA.

MALSR

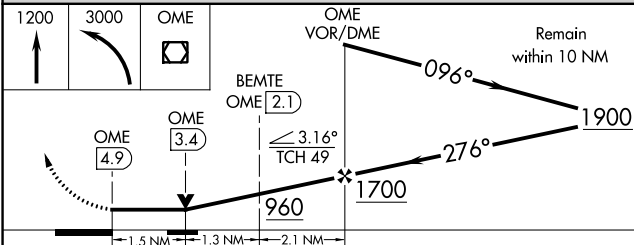
MISSED APPROACH: Climb to 1200 then climbing left turn to 3000 direct OME VOR/DME and hold, continue climb-in-hold to 3000.

AFIS 119.925	ANCHORAGE CENTER 133.3 290.4	NOME RADIO 123.6 (CTAF) 0
-------------------------------	---	--

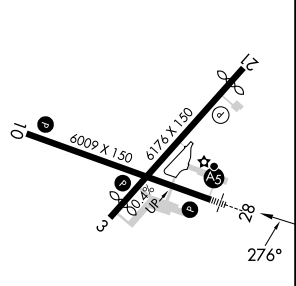


AK, 16 MAY 2024 to 11 JUL 2024

AK, 16 MAY 2024 to 11 JUL 2024



ELEV 41	D TDZE 25
---------	------------------



CATEGORY	A	B	C	D
S-28	960/40	935 (1000-3/4)	960-2	935 (1000-2)
C CIRCLING	960-1 1/4	919 (1000-1 1/4)	960-2 3/4	960-3
			919 (1000-2 3/4)	919 (1000-3)
BEMTE FIX MINIMUMS				
S-28	540/40	515 (500-3/4)	540/55	515 (500-1)
C CIRCLING	540-1	499 (500-1)	540-1 1/2	700-2
			499 (500-1 1/2)	659 (700-2)

REIL Rwy 3 and 10 0	FAF to MAP 4.9 NM
HIRL Rwy 10-28 0	Knots 60 90 120 150 180
MIRL Rwy 3-21 0	Min:Sec 4:54 3:16 2:27 1:58 1:38