

# GALENA EIGHT DEPARTURE

AL-1234 (FAA)

FAIRBANKS INTL (FAI) (PAFA)

FAIRBANKS, ALASKA

AK, 16 MAY 2024 to 11 JUL 2024

## DEPARTURE ROUTE DESCRIPTION

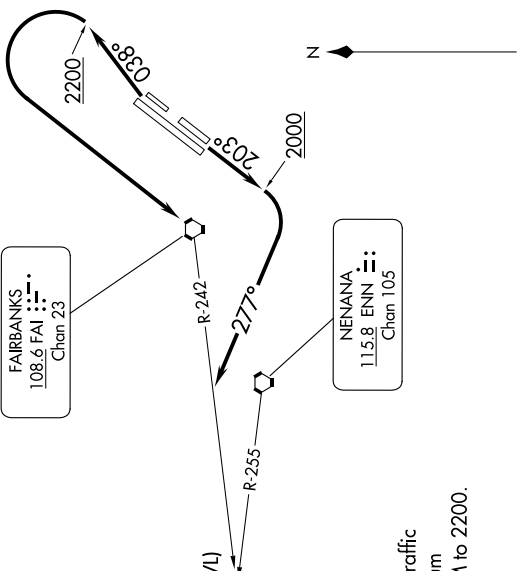
TAKEOFF RUNWAYS 2L/R: Climb on heading 038° to 2200, then left turn direct FAI VORTAC, thence . . . . .  
 TAKEOFF RUNWAYS 20L/R: Climb on heading 203° to 2000, then right turn heading 277°, thence . . . . .

. . . intercept FAI R-242 to ENN R-255, then on ENN R-255 and GAL R-077 to GAL VOR/DME, then continue climb on assigned route and altitude.

## TOP ALTITUDE: ASSIGNED BY ATC

DME required.

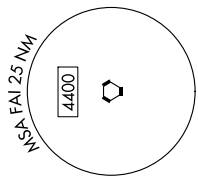
FAIRBANKS DEP CON  
125.35/363.2



FAIRBANKS  
108.6 FAI  
Chan 23

NENANA  
115.8 ENN  
Chan 105

GALENA  
114.8 GAL  
Chan 95



**TAKEOFF MINIMUMS**  
 Rws 2, 2W, 20, 20W: NA- Air Traffic  
 Rws 2L/R: Standard with minimum  
 climb of 230' per NM to 2200.  
 Rws 20L/R: Standard.

NOTE: Chart not to scale.

# GALENA EIGHT DEPARTURE

AK, 16 MAY 2024 to 11 JUL 2024