

HI-ILS Y or LOC Y RWY 20R

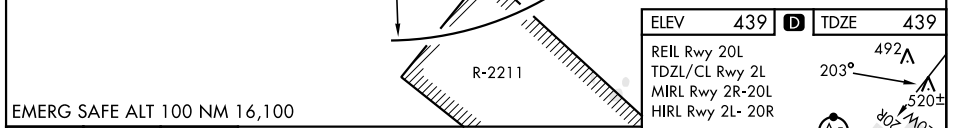
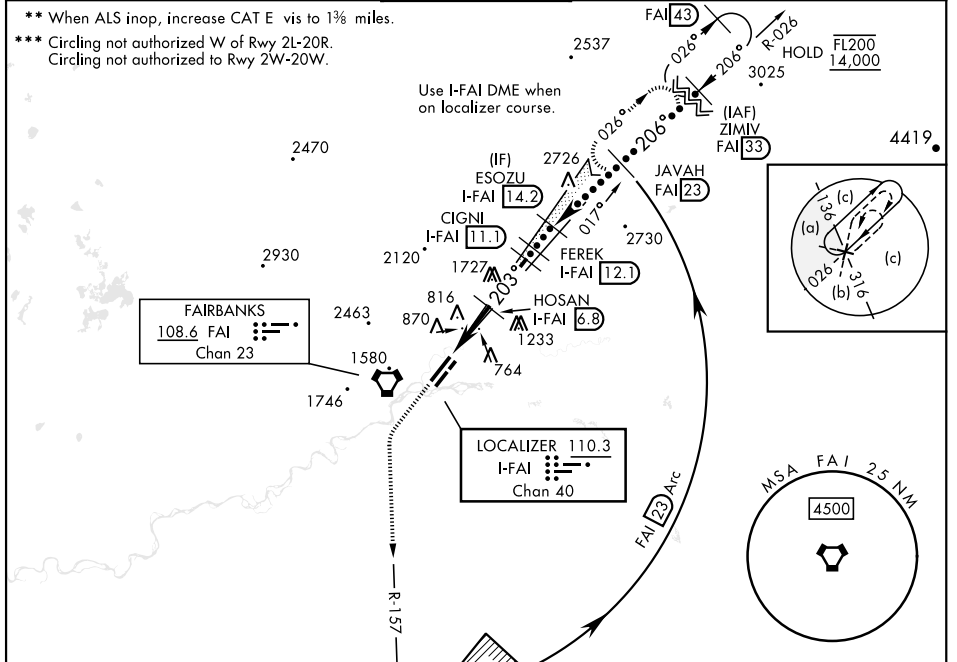
LOC/DME I-FAI 110.3 Chan 40	APCH CRS 203°	Rwy ldg 11,050 TDZE 439 Arprt Elev 439	[USAF]	FAIRBANKS INTL (PAFA)
---	-------------------------	---	--------	-----------------------

DME required for procedure entry.

MAISR **A5**

MISSED APPROACH: Climb to 8000 on heading 203° and FAI VORTAC R-157 to 23 DME, arc northbound to JAVAH/FAI VORTAC 23 DME and hold.

ATIS 124.4	APP CON 125.35 363.2	TOWER 118.3 257.8	GND CON 121.9	CLNC DEL 127.6
----------------------	--------------------------------	-----------------------------	-------------------------	--------------------------



EMERG SAFE ALT 100 NM 16,100	8000	hdg 203°	FAI R-157	FAI 23 Arc	Procedure Turn NA			
VGSI and descent angles not coincident (VGSI Angle 3.00/TCH 74).	HOSAN I-FAI 6.8	CIGNI I-FAI 11.1	FEREK I-FAI 12.1	ESOZU I-FAI 14.2	JAVAH FAI 23	ZIMIV FAI 33	FL200 14,000	GS 3.00° TCH 56
4.6 NM	4.5 NM							
CATEGORY	C	D	E					
S-ILS 20R**	639/24	200 (200-1/2)						
S-LOC 20R**	880/45	441 (500-7/8)						
CIRCLING***	900-1 1/2 461 (500-1 1/2)	1020-2 581 (600-2)	1060-2 1/4 621 (700-2 1/4)					

HI-ILS Y or LOC Y RWY 20R

AK, 16 MAY 2024 to 11 JUL 2024

AK, 16 MAY 2024 to 11 JUL 2024