

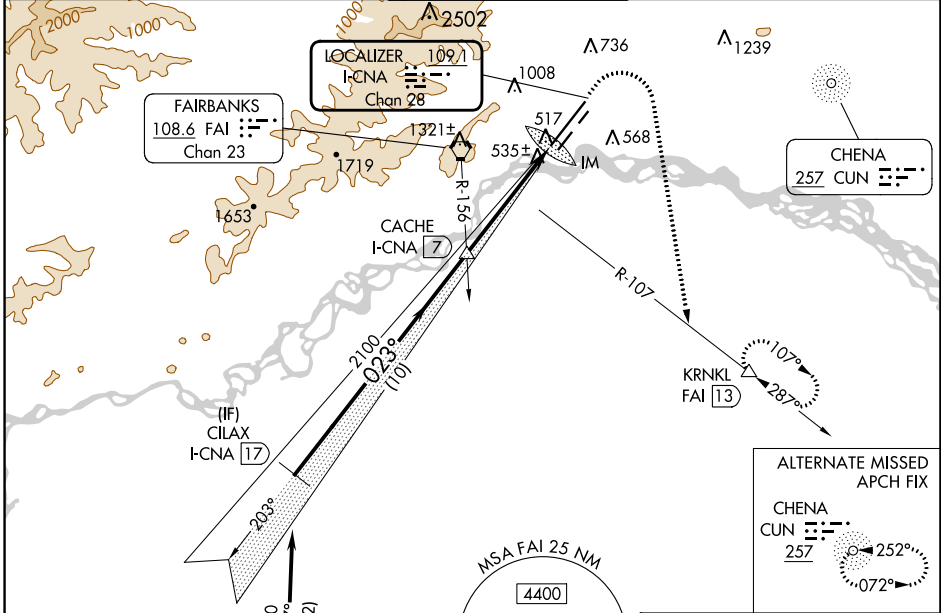
LOC/DME I-CNA <b>109.1</b> Chan 28	APP CRS <b>023°</b>	Rwy Idg TDZE Apt Elev	<b>11050</b> <b>439</b> <b>439</b>
--	------------------------	-----------------------------	--

# ILS RWY 2L (SA CAT I)

## FAIRBANKS INTL (FAI) (PAFA)

RNP APCH - GPS. DME required.	ALSIF-2 	MISSED APPROACH: Climb to 900 then climbing right turn to 5000 on heading 170° and FAI VORTAC R-107 to KRNL/FAI 13 DME and hold, continue climb-in-hold to 5000.
-32°C		Requires specific OPSPEC, MSPEC, or LOA approval.

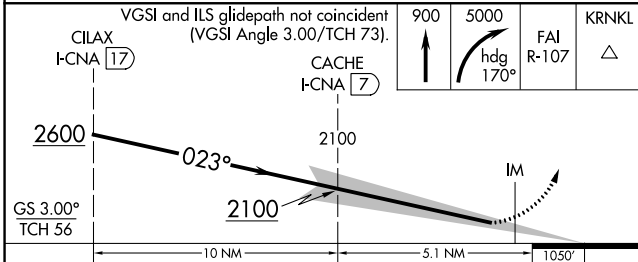
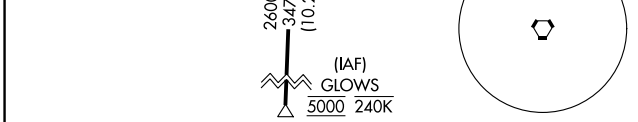
ATIS <b>124.4</b>	FAIRBANKS APP CON <b>125.35 363.2</b>	FAIRBANKS TOWER <b>118.3 257.8</b>	GND CON <b>121.9</b>	CLNC DEL <b>127.6</b>
----------------------	--	---------------------------------------	-------------------------	--------------------------



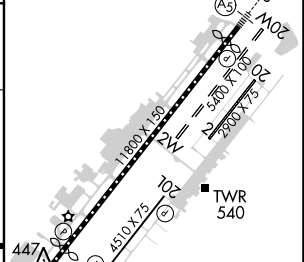
ALTERNATE MISSED APCH FIX

CHENA 257 CUN

**257**



ELEV 439	<b>D</b> TDZE 439
----------	-------------------



CATEGORY	A	B	C	D
S-ILS 2L	RA 139/14 150 DA 589			

**SA CATEGORY I ILS - SPECIAL AIRCREW & AIRCRAFT CERTIFICATION REQUIRED**

REIL Rwy 20L  
TDZ/CL Rwy 2L  
MIRL Rwy 2R-20L  
HIRL Rwy 2L-20R

AK, 16 MAY 2024 to 11 JUL 2024

AK, 16 MAY 2024 to 11 JUL 2024