

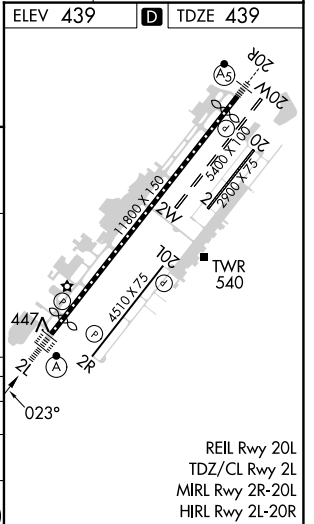
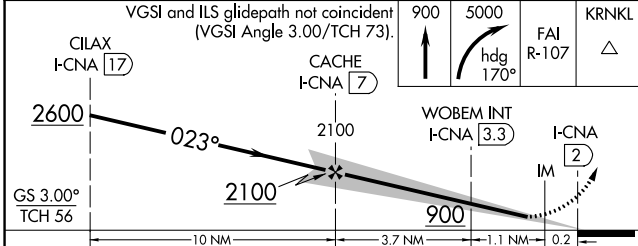
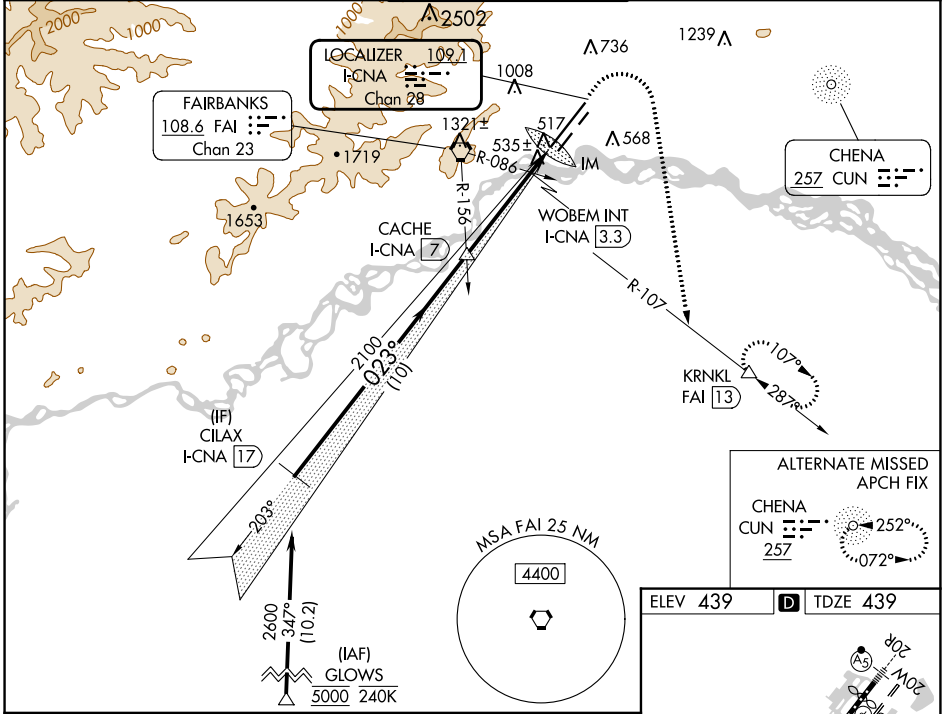
LOC/DME I-CNA	APP CRS	Rwy Idg	11050
109.1	023°	TDZE	439
Chan 28		Apt Elev	439

ILS or LOC RWY 2L

FAIRBANKS INTL (FAI) (PAFA)

RNP APCH - GPS.	ALSIF-2 	MISSED APPROACH: Climb to 900 then climbing right turn to 5000 on heading 170° and FAI VORTAC R-107 to KRNL/FAI 13 DME and hold, continue climb-in-hold to 5000.
DME required.		
Circling NA west of Rwy 2L-20R. Circling NA to Rwys 2W and 20W. For inop ALS, increase S-ILS 2L Cat E visibility to RVR 4000 and S-LOC 2L Cat C/D/E visibility to RVR 5500.		

ATIS	FAIRBANKS APP CON	FAIRBANKS TOWER	GND CON	CINC DEL
124.4	125.35 363.2	118.3 257.8	121.9	127.6



CATEGORY	A	B	C	D	E
S-ILS 2L	639/18 200 (200-½)				
S-LOC 2L	800/24	361 (400-½)	800/35 361 (400-¾)		
CIRCLING	880-1 441 (500-1)	900-1 461 (500-1)	900-1½ 461 (500-1½)	1020-2 581 (600-2)	1060-2¼ 621 (700-2¼)

AK, 16 MAY 2024 to 11 JUL 2024

AK, 16 MAY 2024 to 11 JUL 2024