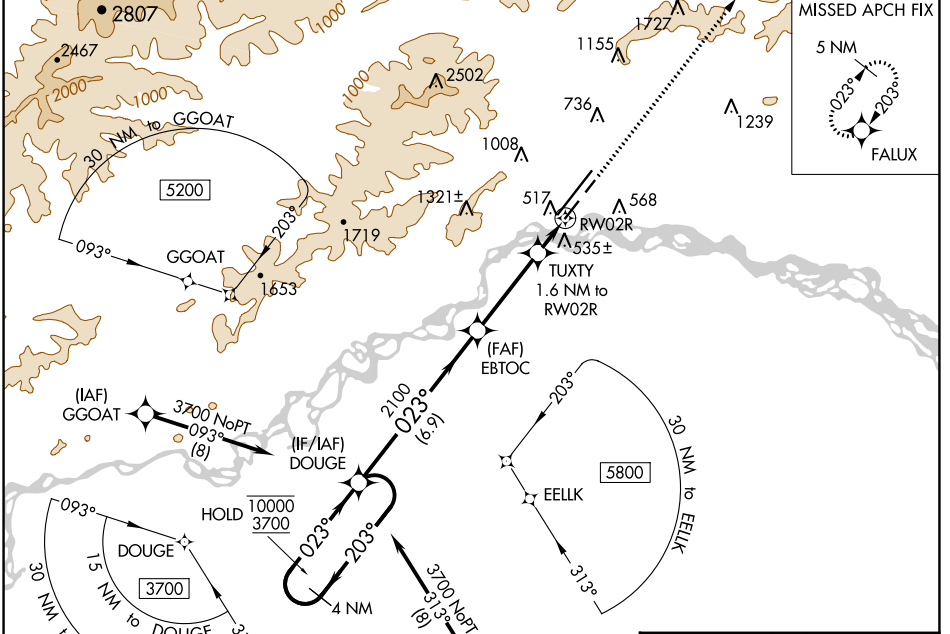


WAAS CH 53612 W02A	APP CRS 023°	Rwy Idg 4510 TDZE 433 Apt Elev 439
----------------------------------------	------------------------	---------------------------------------------------------------

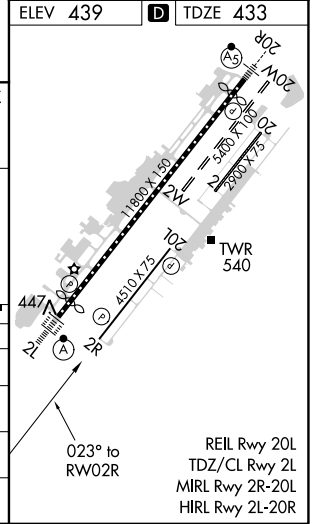
RNAV (GPS) RWY 2R

FAIRBANKS INTL (FAI) (PAFA)

RNP APCH - GPS.		FAIRBANKS APP CON 125.35 363.2		FAIRBANKS TOWER 118.3 257.8		GND CON 121.9	CLNC DEL 127.6
<p>⚠ Circling NA west of Rwy 2L-20R. Circling NA to Rws 2W and 20W. -32°C Rwy 2R helicopter visibility reduction below ¾ SM NA. For uncompensated Baro-VNAV systems, LNAV/VNAV NA below -21°C or above 54°C.</p>				<p>MISSED APPROACH: Climb to 4900 direct FALUX and hold, continue climb-in-hold to 4900.</p>			



4 NM Holding Pattern	DOUGE	EBTOC	TUXTY	4900	FALUX
10000 ← 203°	3700 → 023°	2100	1.6 NM to RWY 2R	↑	✦
GP 3.00° TCH 40		2100	1 NM to RWY 2R		
		*980	0.6	1 NM	
	6.9 NM	3.5 NM			



CATEGORY	A	B	C	D
LPV DA		683-7/8	250 (300-7/8)	
LNAV/VNAV DA		731-1	298 (300-1)	
LNAV MDA		800-1	367 (400-1)	
CIRCLING	880-1 441 (500-1)	900-1 461 (500-1)	900-1½ 461 (500-1½)	1020-2 581 (600-2)

AK, 16 MAY 2024 to 11 JUL 2024

AK, 16 MAY 2024 to 11 JUL 2024