

(RDFLG5.RDFLG) 23222

RDFLG FIVE DEPARTURE (RNAV)

AL-1234 (FAA)

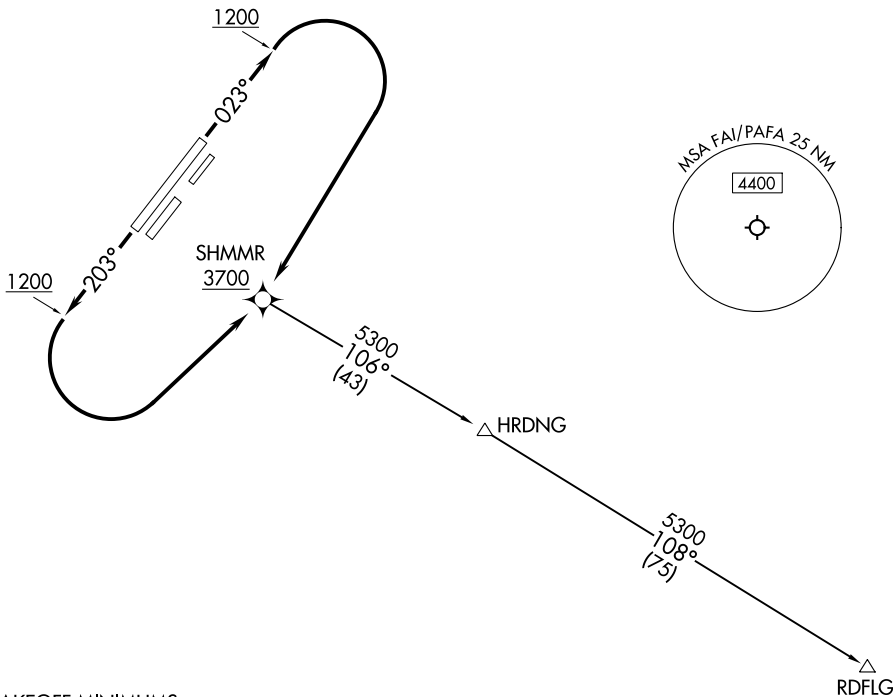
FAIRBANKS INTL (FAI) (PAFA)

FAIRBANKS, ALASKA

**TOP ALTITUDE:
10000**

RNAV 1 - GPS.

FAIRBANKS DEP CON
125.35 363.2
ATIS 124.4
CLNC DEL
127.6
GND CON
121.9
FAIRBANKS TOWER
118.3 257.8



TAKEOFF MINIMUMS

Rwys 2, 2R, 2W, 20, 20L, 20W: NA - Air Traffic.

Rwy 20R: Standard.

Rwy 2L: Standard with minimum climb of 230' per NM to 1500.

NOTE: Chart not to scale.



DEPARTURE ROUTE DESCRIPTION

TAKEOFF RUNWAY 2L: Climb on heading 023° to 1200, then climbing right turn direct SHMMR, cross SHMMR at or above 3700, thence. . . .

TAKEOFF RUNWAY 20R: Climb on heading 203° to 1200, then climbing left turn direct SHMMR, cross SHMMR at or above 3700, thence. . . .

. . . .on RDLFG transition. Climb and maintain 10000. Expect 17000 ten minutes after departure.

RDFLG TRANSITION (RDFLG5.RDFLG)

RDFLG FIVE DEPARTURE (RNAV)

(RDFLG5.RDFLG) 10AUG23

FAIRBANKS, ALASKA
FAIRBANKS INTL (FAI) (PAFA)

AK, 16 MAY 2024 to 11 JUL 2024

AK, 16 MAY 2024 to 11 JUL 2024