

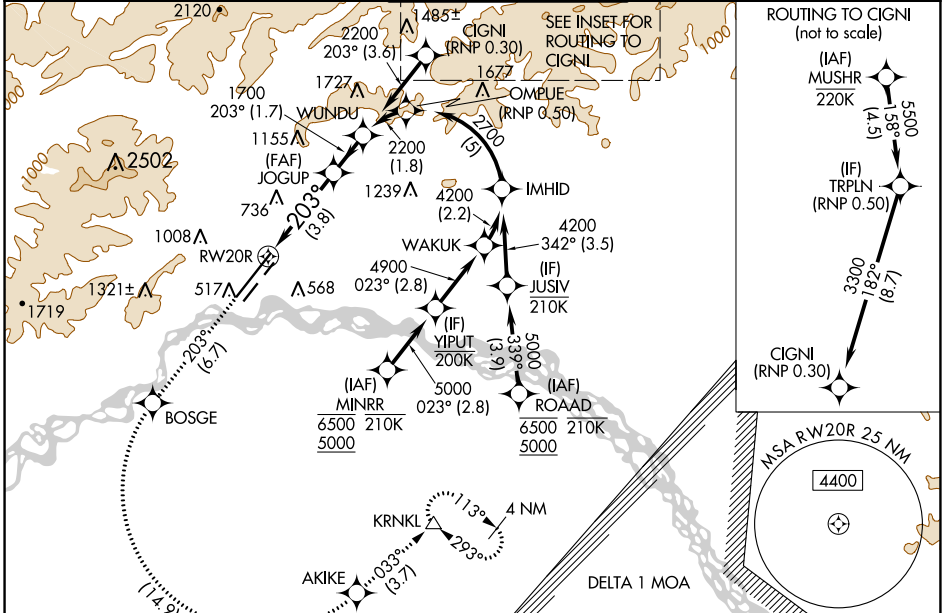
APP CRS	Rwy ldg <b>11050</b>
<b>203°</b>	TDZE <b>439</b>
	Apt Elev <b>439</b>

# RNAV (RNP) Z RWY 20R

FAIRBANKS INTL (FAI) (PAFA)

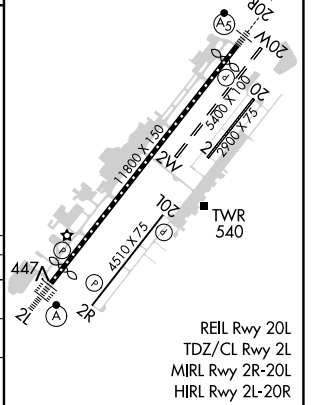
RNP AR APCH - GPS.	MALSR	MISSED APPROACH: Climb to 4000 on track 203° to BOSGE then left turn to AKIKE then on track 033° to KRNLK and hold.
-32°C For uncompensated Baro-VNAV systems, procedure NA below -18°C or above 54°C. For inop ALS, increase RNP 0.30 all Cats visibility to 1 1/2 SM.		

ATIS	FAIRBANKS APP CON	FAIRBANKS TOWER	GND CON	CLNC DEL
<b>124.4</b>	<b>125.35 363.2</b>	<b>118.3 257.8</b>	<b>121.9</b>	<b>127.6</b>



ELEV 439	TDZE 439
----------	----------

4000	BOSGE	AKIKE	tr 033°	KRNLK	See planview for multiple IF locations.	WUNDU
tr 203°					JOGUP	
VGSI and RNAV glidepath not coincident (VGSI Angle 3.00/TCH 74).						
CATEGORY	A	B	C	D		
RNP 0.10 DA		763/26	324 (400-1/2)			
RNP 0.30 DA		923/50	484 (500-1)			
<b>AUTHORIZATION REQUIRED</b>						



AK, 16 MAY 2024 to 11 JUL 2024

AK, 16 MAY 2024 to 11 JUL 2024