

APP CRS	Rwy Idg	11050
023°	TDZE	439
	Apt Elev	439

RNAV (RNP) Z RWY 2L

FAIRBANKS INTL (FAI) (PAFA)

RNP AR APCH - GPS.

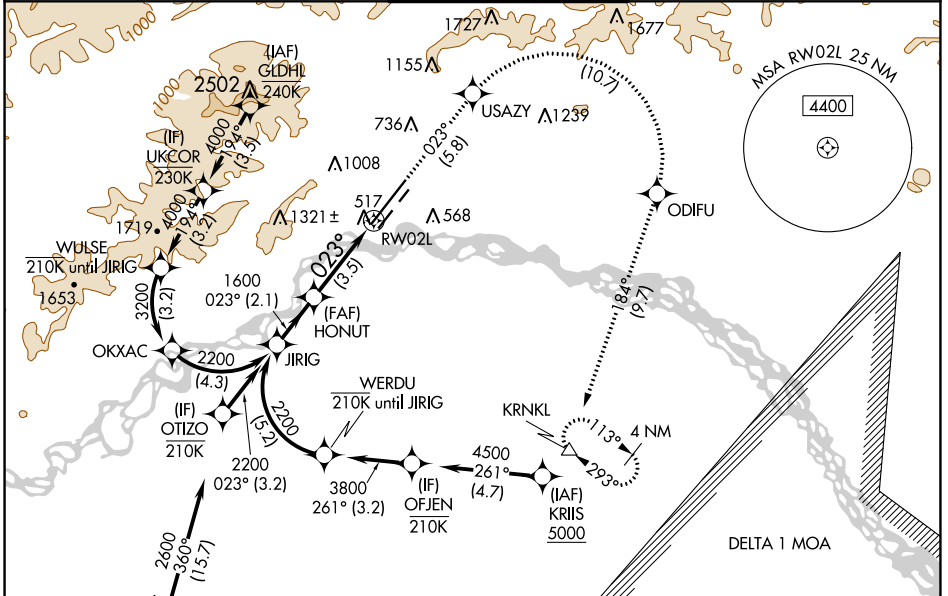
⚠ For uncompensated Baro-VNAV systems, procedure NA below -19°C or above 54°C. For inop ALS, increase RNP 0.10* all Cats visibility to RVR 4500, increase RNP 0.10 all Cats visibility to RVR 5500, and increase RNP 0.30 all Cats visibility to RVR 6000.

ALS-F-2

MISSED APPROACH: Climb to 5000 on track 023° USAZY then right turn to ODIFU and track 184° to KRNL and hold.

*Missed approach requires minimum climb of 222 feet per NM to 2420.

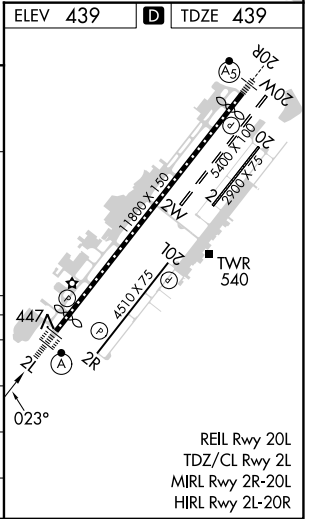
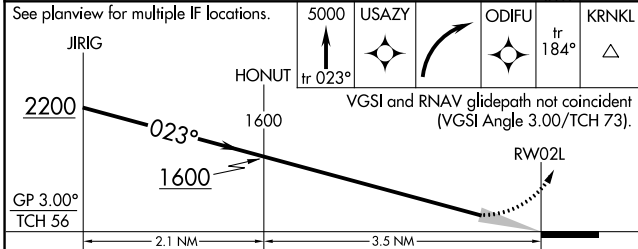
ATIS	FAIRBANKS APP CON	FAIRBANKS TOWER	GND CON	CLNC DEL
124.4	125.35 363.2	118.3 257.8	121.9	127.6



AK, 16 MAY 2024 to 11 JUL 2024

AK, 16 MAY 2024 to 11 JUL 2024

ELEV 439	D	TDZE 439
----------	----------	----------



CATEGORY	A	B	C	D
RNP 0.10 DA*		755/24	316 (400-½)	
RNP 0.10 DA		805/35	366 (400-¾)	
RNP 0.30 DA		855/40	416 (500-¾)	

AUTHORIZATION REQUIRED

REIL Rwy 20L
TDZ/CL Rwy 2L
MIRL Rwy 2R-20L
HIRL Rwy 2L-20R