

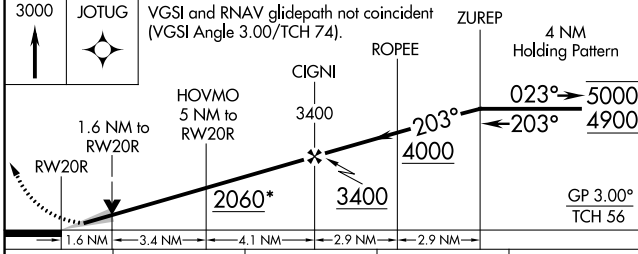
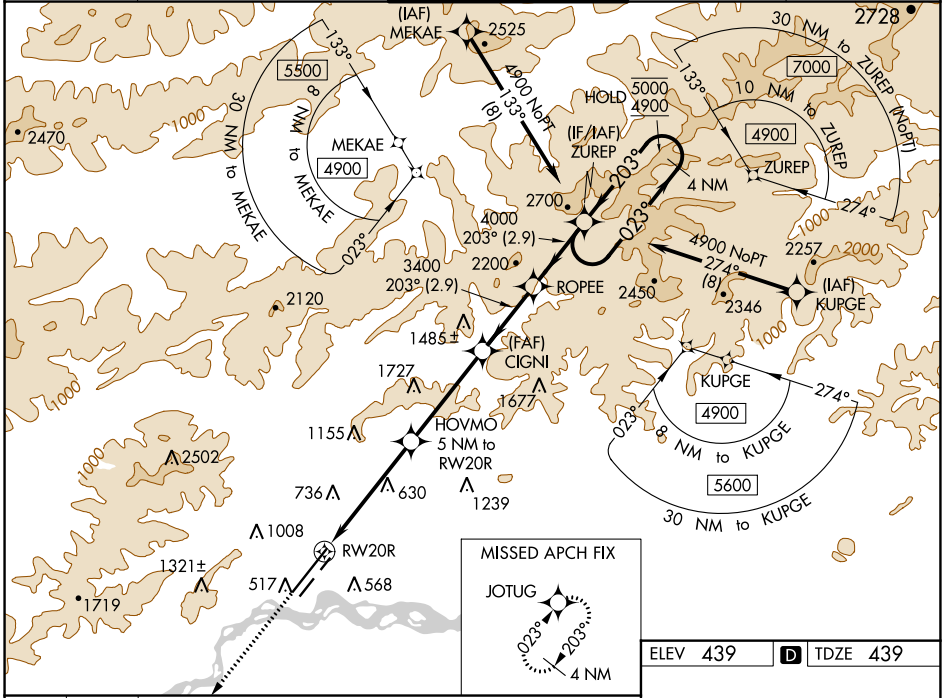
WAAS CH <b>58329</b> <b>W20B</b>	APP CRS <b>203°</b>	Rwy ldg <b>11050</b> TDZE <b>439</b> Apt Elev <b>439</b>
--	------------------------	--

# RNAV (GPS) Y RWY 20R

FAIRBANKS INTL (FAI) (PAFA)

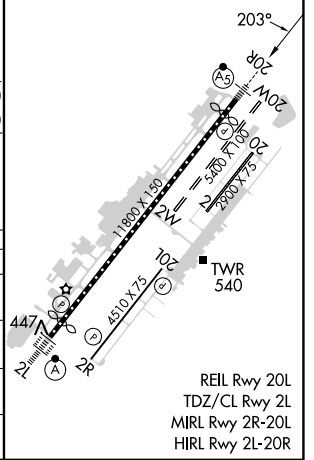
RNP APCH - GPS.		MALSR	MISSED APPROACH: Climb to 3000 direct JOTUG and hold.
⚠ Circling NA west of Rwy 2L-20R. Circling NA to Rwy 2W and 20W. ⚠ -32°C For uncompensated Baro-VNAV systems, LNAV/VNAV NA below -18°C or above 54°C. # RVR 1800 authorized with use of FD or AP or HUD to DA.			

ATIS <b>124.4</b>	FAIRBANKS APP CON <b>125.35 363.2</b>	FAIRBANKS TOWER <b>118.3 257.8</b>	GND CON <b>121.9</b>	CLNC DEL <b>127.6</b>
----------------------	--	---------------------------------------	-------------------------	--------------------------



ELEV 439	<b>D</b> TDZE 439
----------	-------------------

CATEGORY	A	B	C	D
LPV DA#		639/24	200 (200-½)	
LNAV/VNAV DA		1148-2	709 (800-2)	
LNAV MDA	1020/24	581 (600-½)	1020-1¼	581 (600-1¼)
<b>C</b> CIRCLING	1020-1	581 (600-1)	1020-1¾	1020-2
			581 (600-¾)	581 (600-2)



AK, 16 MAY 2024 to 11 JUL 2024

AK, 16 MAY 2024 to 11 JUL 2024