

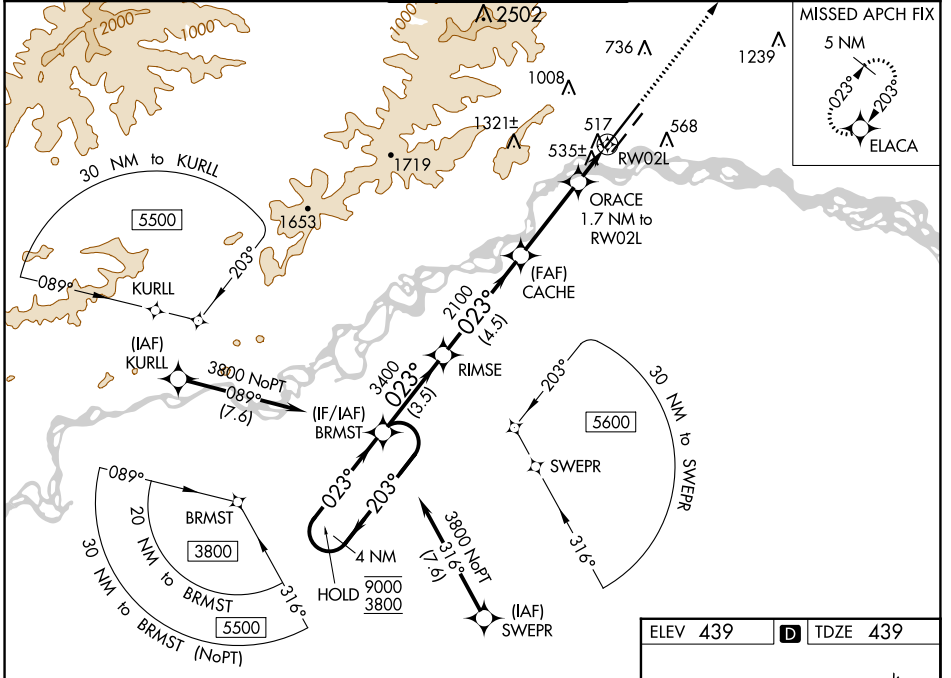
WAAS CH <b>57915</b> <b>W02B</b>	APP CRS <b>023°</b>	Rwy Idg <b>11050</b> TDZE <b>439</b> Apt Elev <b>439</b>
--	------------------------	--

# RNAV (GPS) Y RWY 2L

FAIRBANKS INTL (FAI) (PAFA)

RNP APCH - GPS. Circling NA west of Rwy 2L-20R. Circling NA to Rwy 2W and 20W. -32°C For uncompensated Baro-VNAV systems, LNAV/VNAV NA below -19°C or above 54°C. For inop ALS, increase LNAV/VNAV all Cats visibility to RVR 4500 and LNAV Cat C/D visibility to RVR 5500.	ALSF-2 	MISSED APPROACH: Climb to 4900 direct ELACA and hold, continue climb-in hold to 4900.
--	------------	---

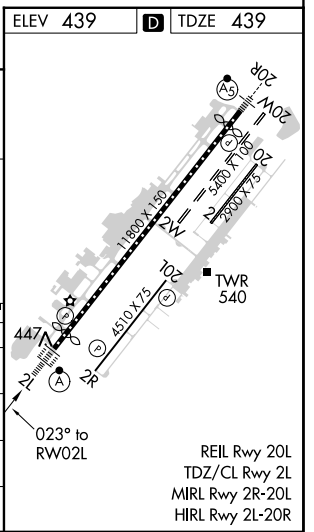
ATIS <b>124.4</b>	FAIRBANKS APP CON <b>125.35 363.2</b>	FAIRBANKS TOWER <b>118.3 257.8</b>	GND CON <b>121.9</b>	CLNC DEL <b>127.6</b>
----------------------	--	---------------------------------------	-------------------------	--------------------------



AK, 16 MAY 2024 to 11 JUL 2024

AK, 16 MAY 2024 to 11 JUL 2024

4 NM Holding Pattern	BRMST	RIMSE	CACHE	ORACE	ELACA
9000 ← 203°	3800 → 023°	3400 → 023°	2100	1.7 NM to RW02L	4900
GP 3.00°				0.9 NM to RW02L	
TCH 56					
	← 3.5 NM	← 4.5 NM	← 3.4 NM	← 0.8	← 0.9



CATEGORY	A	B	C	D
LPV DA		639/18	200 (200-½)	
LNAV/VNAV DA		720/24	281 (300-½)	
LNAV MDA	800/24	361 (400-½)	800/40	361 (400-¾)
CIRCLING	880-1 441 (500-1)	900-1 461 (500-1)	900-1½ 461 (500-1½)	1020-2 581 (600-2)