

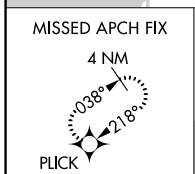
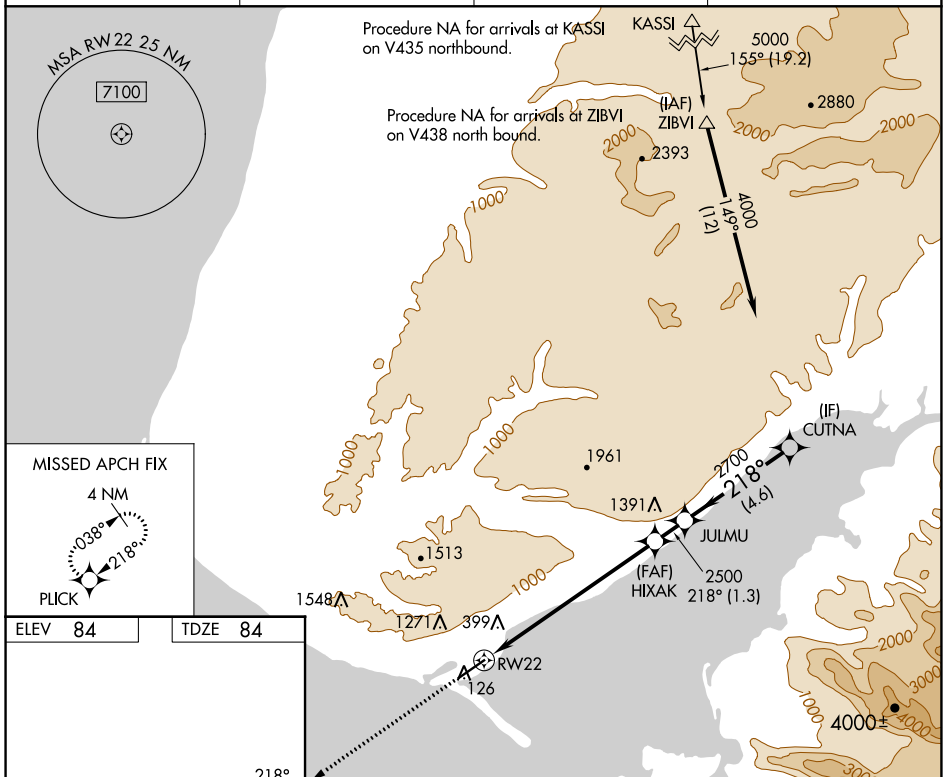
WAAS CH 82402 W22A	APP CRS 218°	Rwy Idg TDZE Apt Elev	6701 84 84
--	------------------------	-----------------------------	---------------------------------------

RNAV (GPS) Z RWY 22

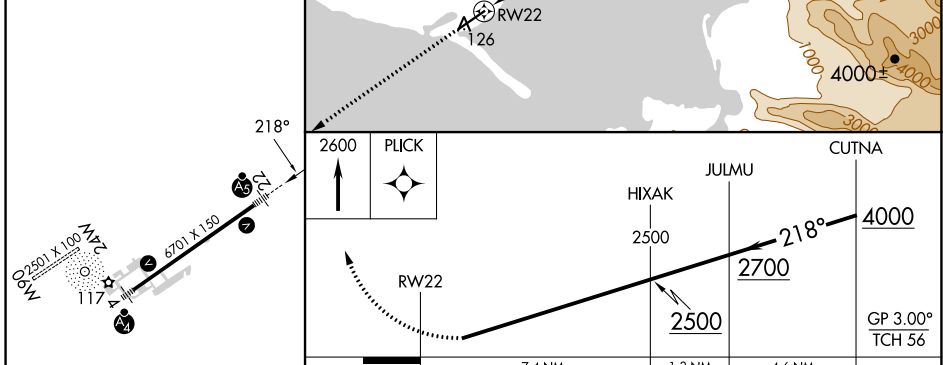
HOMER (HOM) (PAHO)

RNP APCH. ▼ Helicopter visibility reduction below 3/4 SM NA. Inop table does not apply to LPV minimums. Baro-VNAV NA. When local altimeter setting not received, procedure NA. For inop ALS increase LNAV/VNAV all Cats visibility to 1 1/2 SM.	MALSR 	MISSED APPROACH: Climb to 2600 direct PLICK and hold.
--	-----------	---

AFIS 135.65	ANCHORAGE CENTER 125.9 270.3	HOMER RADIO 123.6 (CTAF) 0	UNICOM 122.7 123.0 123.05
-----------------------	--	--------------------------------------	-------------------------------------



ELEV 84	TDZE 84
----------------	----------------



CATEGORY	A	B	C	D
LPV DA		386-1	302 (400-1)	
LNAV/VNAV DA		731-1 5/8	647 (700-1 1/2)	

AK, 16 MAY 2024 to 11 JUL 2024

AK, 16 MAY 2024 to 11 JUL 2024