

KING SALMON, ALASKA

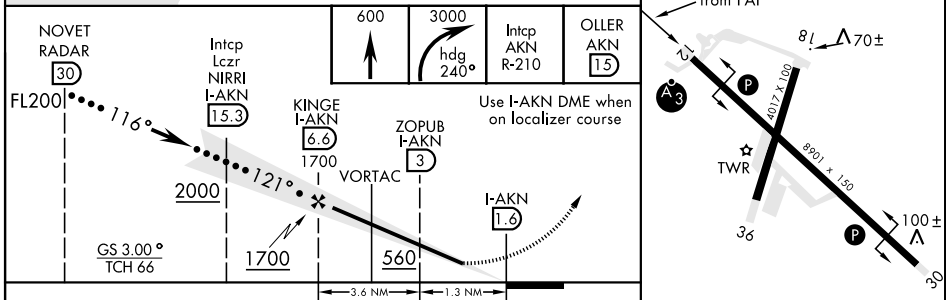
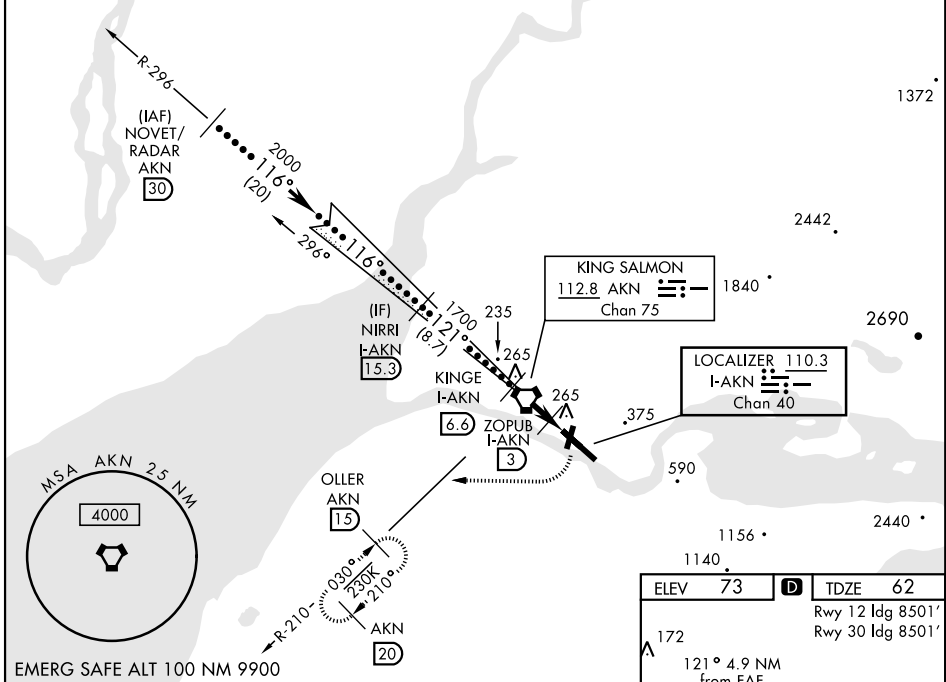
# HI-ILS Z or LOC Z RWY 12

LOC/DME I-AKN <b>110.3</b> Chan <b>40</b>	APCH CRS <b>121°</b>	Rwy Idg TDZE Arpt Elev <b>8501</b> <b>62</b> <b>73</b>	AL-1237 [USAF]	KING SALMON (PAKN)
---	-------------------------	---	----------------	--------------------

DME required. RADAR required for procedure entry.	SSALR 	MISSED APPROACH: Climb to 600, then climbing right turn to 3000 via heading 240° and AKN VORTAC R-210 to OLLER/AKN 15 DME and hold.
<p>▼ * When ALS inop, increase RVR to 40.</p> <p>** When ALS inop, increase RVR to 55.</p> <p>☁ -31° C</p>		

ATIS <b>128.8</b>	ANCHORAGE CENTER <b>124.8 354.0</b>	TOWER ★ <b>118.3 279.5</b>	GND CON <b>121.9</b>	CTAF <b>121.9 352.05</b>	UNICOM <b>122.95</b>
----------------------	--	-------------------------------	-------------------------	-----------------------------	-------------------------

† When control tower closed, increase RVR to 50.  
Autopilot coupled approaches not authorized below 700' MSL.



CATEGORY	C	D	E
S-ILS 12*†	262/24	200 (300-½)	
S-LOC 12**†	420/30	358 (400-¾)	
CIRCLING	580-1½ 507 (600-1½)	900-2¾ 827 (900-2¾)	960-3 887 (900-3)

HIRL Rwy 12-30 (L)  
MIRL Rwy 18-36 (L)

KING SALMON, ALASKA 58° 41' N-156° 39' W KING SALMON (PAKN)

# HI-ILS Z or LOC Z RWY 12

AK, 16 MAY 2024 to 11 JUL 2024

AK, 16 MAY 2024 to 11 JUL 2024

Amdt 8 22APR21