

KING SALMON, ALASKA

# HI-VOR Z or TACAN Z RWY 30

VORTAC AKN <b>112.8</b> Chan <b>75</b>	APCH CRS <b>296°</b>	Rwy ldg TDZE Arpt Elev <b>8501</b> <b>73</b> <b>73</b>
--	-------------------------	---

AL-1237 [USAF]

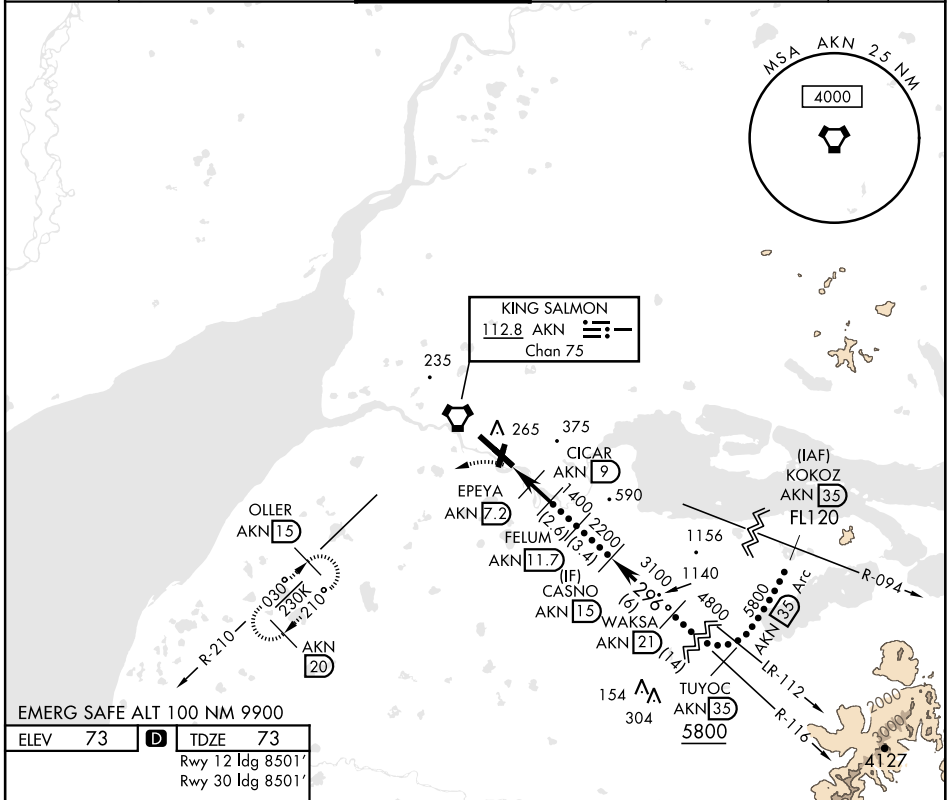
KING SALMON (PAKN)

DME required.

MISSED APPROACH: Climbing left turn to 3000 on heading 240° and on AKN VORTAC R-210 to OLLER/ 15 DME and hold.

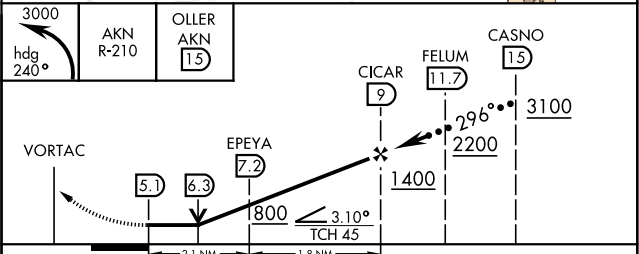
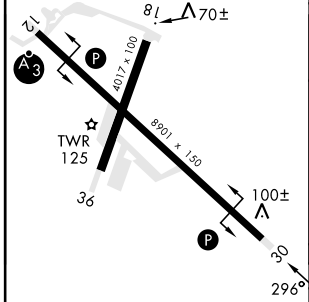
**33**-31° C

ATIS <b>128.8</b>	ANCHORAGE CENTER <b>124.8 354.0</b>	TOWER ★ <b>118.3 279.5</b>	GND CON <b>121.9</b>	CTAF <b>121.90 352.05</b>	UNICOM <b>122.95</b>
----------------------	--	-------------------------------	-------------------------	------------------------------	-------------------------



EMERG SAFE ALT 100 NM 9900

ELEV 73	<b>D</b> TDZE 73
	Rwy 12 ldg 8501'
	Rwy 30 ldg 8501'



CATEGORY	C	D	E
S-30	480-1½	407	(500-1½)
<b>C</b> CIRCLING	580-1½ 507 (600-1½)	900-2¾ 827 (900-2¾)	960-3 887 (900-3)

KING SALMON, ALASKA

58°41'N-156°39'W

KING SALMON (PAKN)

Amdt 6 03NOV22

# HI-VOR Z or TACAN Z RWY 30

AK, 16 MAY 2024 to 11 JUL 2024

AK, 16 MAY 2024 to 11 JUL 2024