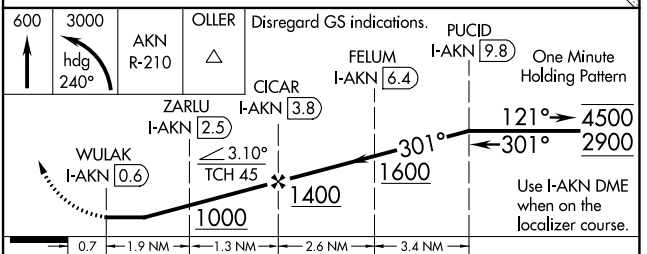
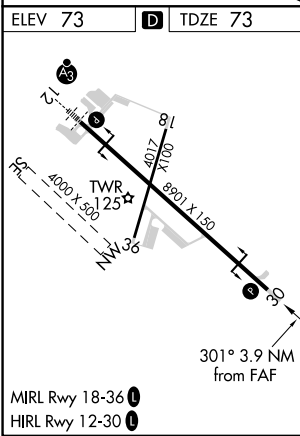
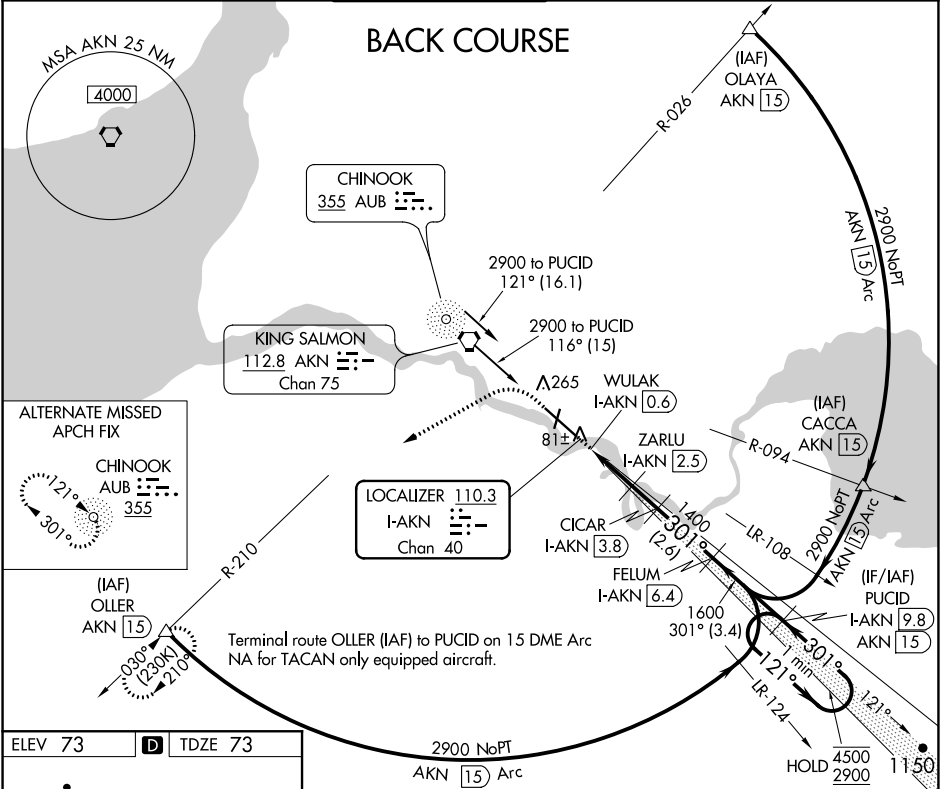


LOC/DME I-AKN <b>110.3</b> Chan <b>40</b>	APP CRS <b>301°</b>	Rwy Idg TDZE Apt Elev <b>8501</b> <b>73</b> <b>73</b>
---	------------------------	--

# LOC BC RWY 30

KING SALMON (AKN)(PAKN)

DME required.		MISSED APPROACH: Climb to 600 then climbing left turn to 3000 on heading 240° and AKN VORTAC R-210 to OLLER/15 DME and hold.				
ATIS <b>128.8</b>	ANCHORAGE CENTER <b>124.8 354.0</b>	KING SALMON TOWER* <b>118.3 279.5</b>	GND CON <b>121.9</b>	UNICOM <b>122.95</b>	CTAF <b>121.90 352.05</b>	



CATEGORY	A	B	C	D	E
S-30	340-1 267 (300-1)				
CIRCLING	580-1	507 (600-1)	580-1½ 507 (600-1½)	900-2¾ 827 (900-2¾)	960-3 887 (900-3)

AK, 16 MAY 2024 to 11 JUL 2024

AK, 16 MAY 2024 to 11 JUL 2024