

WAAS CH <b>72608</b> <b>W12A</b>	APP CRS <b>121°</b>	Rwy Idg TDZE <b>62</b> Apt Elev <b>73</b>
--	------------------------	---

# RNAV (GPS) RWY 12

KING SALMON (AKN)(PAKN)

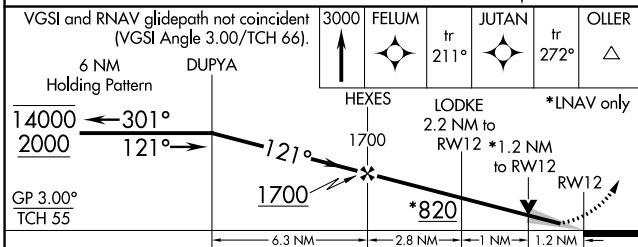
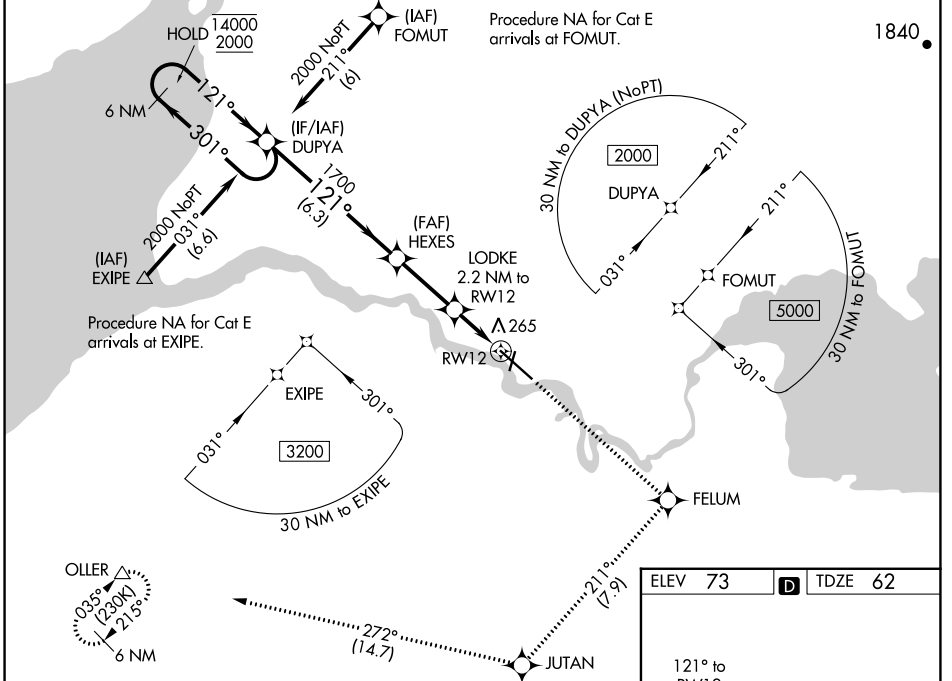
RNP APCH-GPS.

For uncompensated Baro-VNAV systems, procedure NA below -18°C or above 54°C.  
 For inop ALS, increase LPV Cat E visibility to RVR 4000, increase LNAV/VNAV all Cats visibility to RVR 5000 and increase LNAV Cat E visibility to 1½ SM. When control tower closed, LPV, LNAV/VNAV and LNAV visibility RVR 5000. When control tower closed, inop table does not apply to LPV, LNAV/VNAV and LNAV Cats A/B.  
 # RVR 1800 authorized with use of FD or AP or HUD to DA (NA when control tower closed).

SSALR

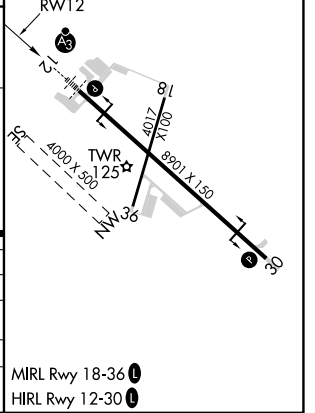
MISSED APPROACH: Climb to 3000 direct FELUM and on track 211° to JUTAN and on track 272° to OLLER and hold.

ATIS <b>128.8</b>	ANCHORAGE CENTER <b>124.8 354.0</b>	KING SALMON TOWER* <b>118.3 279.5</b>	GND CON <b>121.9</b>	UNICOM <b>122.95</b>	CTAF <b>121.9 352.05</b>
----------------------	--	--	-------------------------	-------------------------	-----------------------------



ELEV 73	TDZE 62
---------	---------

CATEGORY	A	B	C	D	E
LPV DA#	262/24 200 (200-½)				
LNAV/VNAV DA	426/35 364 (400-¾)				
LNAV MDA	520/24 458 (500-½)		520/45 458 (500-¾)		
CIRCLING	580-1 507 (600-1)		580-1½ 507 (600-1½)	900-2¾ 827 (900-2¾)	960-3 887 (900-3)



AK, 16 MAY 2024 to 11 JUL 2024

AK, 16 MAY 2024 to 11 JUL 2024