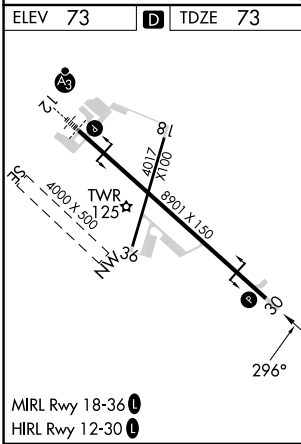
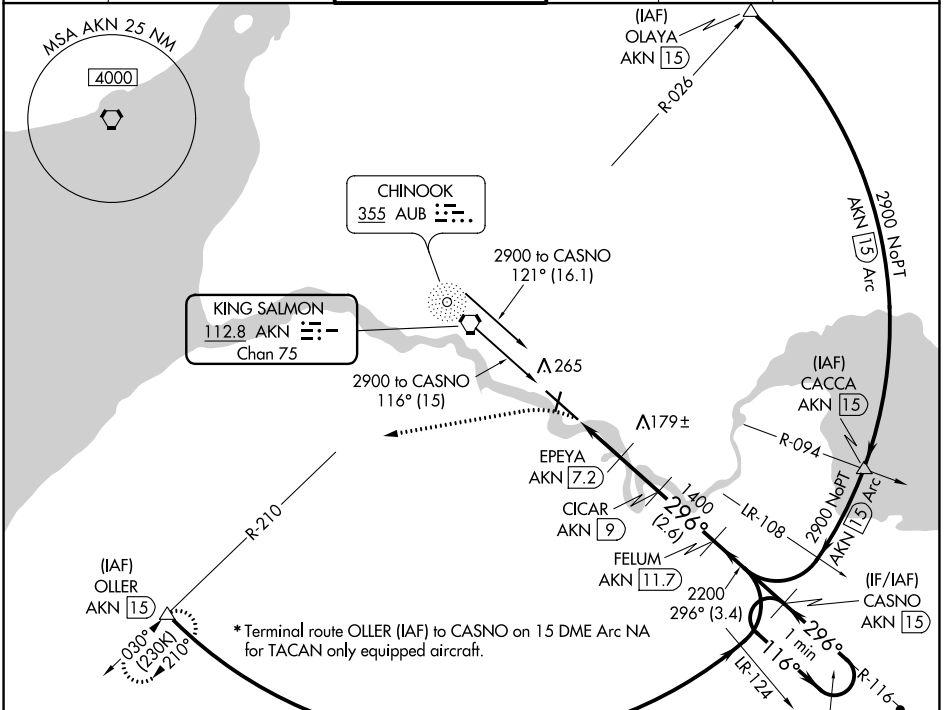


VORTAC AKN 112.8 Chan 75	APP CRS 296°	Rwy Idg TDZE Apt Elev 8501 73 73
---------------------------------------	------------------------	--

VOR Y or TACAN Y RWY 30

KING SALMON (AKN)(PAKN)

DME required.		MISSED APPROACH: Climbing left turn to 3000 on heading 240° and on AKN VORTAC R-210 to OLLER/15 DME and hold.			
ATIS 128.8	ANCHORAGE CENTER 124.8 354.0	KING SALMON TOWER* 118.3 279.5	GND CON 121.9	UNICOM 122.95	CTAF 121.9 352.05



3000	AKN R-210	OLLER			
hdg 240°			One Minute Holding Pattern		
	AKN 5.1	AKN 6.3	EPEYA AKN 7.2	CICAR AKN 9	FELUM AKN 11.7
			AKN 15		CASNO AKN 15
		800	1400	2200	6000
		116°	296°	116°	296°
		1.1 NM	0.9 NM	1.8 NM	2.6 NM
		3.10°	TCH 45		
CATEGORY	A	B	C	D	E
S-30	480-1	407 (500-1)	480-1½	407 (500-1½)	
CIRCLING	580-1	507 (600-1)	580-1½	900-2¾	960-3
			507 (600-1½)	827 (900-2¾)	887 (900-3)

AK, 16 MAY 2024 to 11 JUL 2024

AK, 16 MAY 2024 to 11 JUL 2024