

AK, 16 MAY 2024 to 11 JUL 2024

TOP ALTITUDE: ASSIGNED BY ATC

ANCHORAGE CENTER
118.5 278.3
COLD BAY RADIO
123.6

TAKEOFF MINIMUMS

Rwys 8, 15, 33: Standard.

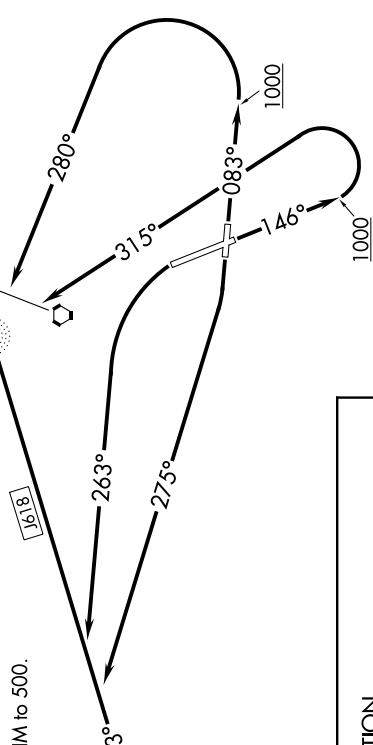
Rwy 26: 900-2³/₄ or standard with a minimum climb of 400' per NM to 500.

MORDI
9000
8000
*5300
243°
(52)

CHUNA
30
CDB

ELFEE
341 ELF
:---:---:---

COLD BAY
112.6 CDB
:---:---:---
Chan 73



DEPARTURE ROUTE DESCRIPTION

TAKEOFF RUNWAY 8: Climb to 1000 on heading 083° then climbing left turn on course 280° to ELF NDB, thence. . . .

TAKEOFF RUNWAY 15: Climb to 1000 on heading 146° then climbing left turn on course 315° to ELF NDB, thence. . . .

TAKEOFF RUNWAY 26: Climbing right turn heading 275°, thence. . . .

TAKEOFF RUNWAY 33: Climbing left turn heading 263°, thence. . . .

. . . intercept the 243° bearing from ELF NDB to CHUNA, maintain assigned altitude.

MORDI TRANSITION [CHUNA2.MORDI]: From over CHUNA on ELF NDB 243° to MORDI.

NOTE: ADF and DME required.
NOTE: Chart not to scale.

AK, 16 MAY 2024 to 11 JUL 2024