

HI-VOR or TACAN RWY 15

VORTAC CDB 112.6 Chan 73	APCH CRS 145°	Rwy Idg 10,179 TDZE 75 Arprt Elev 100
--	-------------------------	--

AL-1241 [USAF]

COLD BAY (CDB) (PACD)

DME required



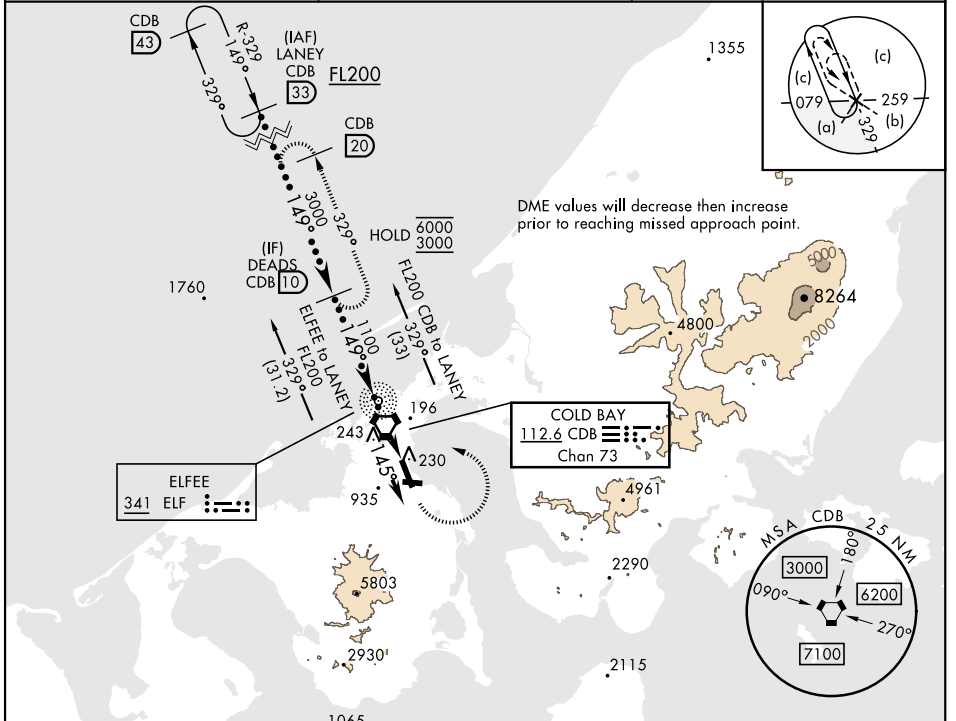
MISSED APPROACH: Climb to 1200, then climbing left turn to 3000 direct CDB VORTAC, then on CDB R-329 to DEADS/CDB 10 DME and hold.

* When ALS inop, increase vis to 1 1/2 miles.
** Circling not authorized SW of Rwy 15-33.

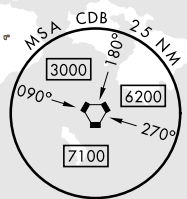
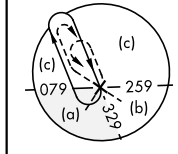
ANCHORAGE CENTER
118.5 278.3

COLD BAY RADIO
123.6 (CTAF)

ASOS
135.75



DME values will decrease then increase prior to reaching missed approach point.



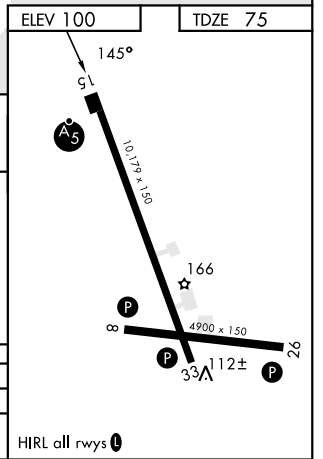
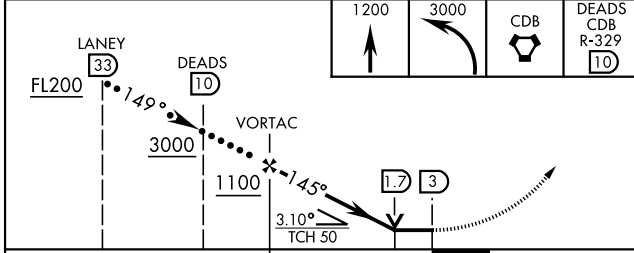
ELFFEE
341 ELF

COLD BAY
112.6 CDB
Chan 73

AK, 16 MAY 2024 to 11 JUL 2024

AK, 16 MAY 2024 to 11 JUL 2024

ELEV 100	TDZE 75
----------	---------



CATEGORY	C	D	E
S-15 *	540/50	465	(500-1)
CIRCLING **	560-1 1/2 460 (500-1 1/2)	860-2 1/2 760 (800-2 1/2)	940-3 840 (900-3)

HIRL all rwys

HI-VOR or TACAN RWY 15