

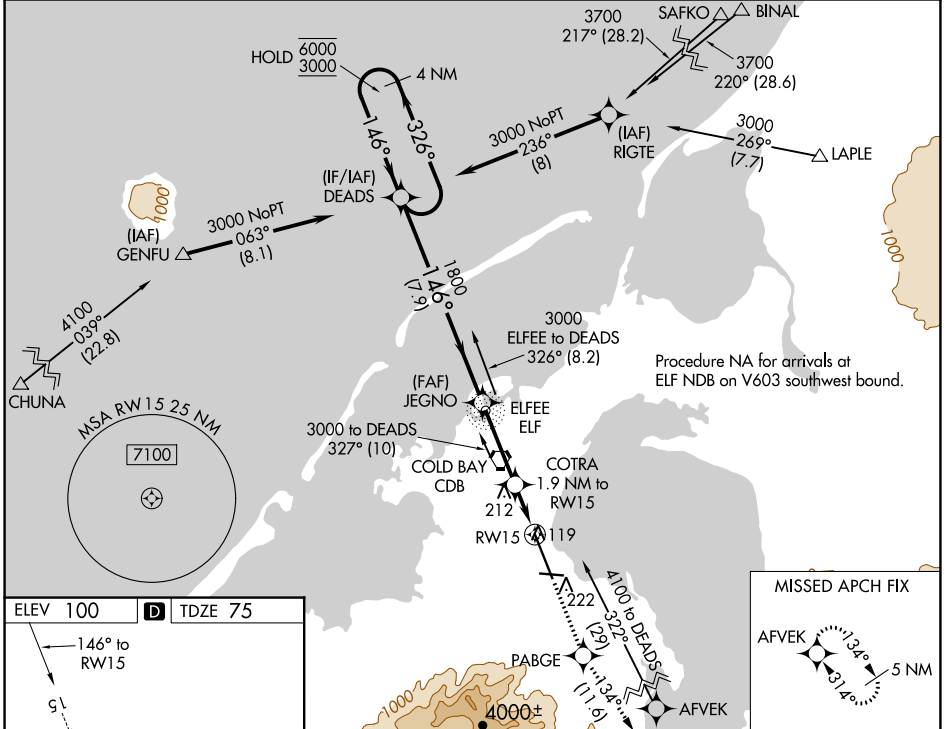
WAAS CH 45612 W15A	APP CRS 146°	Rwy Idg TDZE 75 Apt Elev 100	10179
--	------------------------	--	--------------

RNAV (GPS) RWY 15

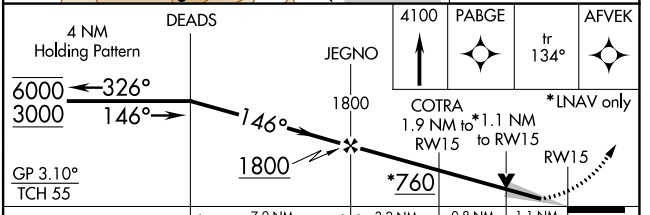
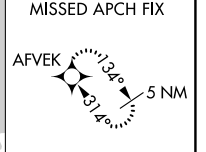
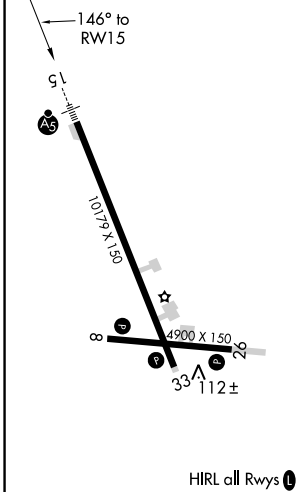
COLD BAY (CDB) (PACD)

RNP APCH.	MALSR	MISSED APPROACH: Climb to 4100 direct PABGE and on track 134° to AFVEK and hold, continue climb-in-hold to 4100.
<p>⚠ For uncompensated Baro-VNAV systems, LNAV/VNAV NA below -10°C or above 54°C. Circling NA for Cat A southwest of Rwy 15-33 at night. Circling NA for Cats B/C/D southwest of Rwy 15-33. For inop ALS, increase LNAV/VNAV all Cats visibility to RVR 4000 and LNAV Cat C/D visibility to RVR 6000. #RVR 1800 authorized with use of FD or AP or HUD to DA.</p>		

ASOS 135.75	ANCHORAGE CENTER 118.5 278.3	COLD BAY RADIO 123.6 (CTAF) 0
-----------------------	--	---



ELEV 100	D	TDZE 75
----------	----------	---------



CATEGORY	A	B	C	D
LPV DA#		275/24	200 (200-1/2)	
LNAV/VNAV DA		325/24	250 (300-1/2)	
LNAV MDA	480/24	405 (400-1/2)	480/40	405 (400-3/4)
	540-1	560-1	560-1 1/2	860-2 1/2
C CIRCLING	440 (500-1)	460 (500-1)	460 (500-1 1/2)	760 (800-2 1/2)

AK, 16 MAY 2024 to 11 JUL 2024

AK, 16 MAY 2024 to 11 JUL 2024