

WAAS CH 49106 W33A	APP CRS 326°	Rwy Idg 10179 TDZE 93 Apt Elev 100
--	------------------------	---

RNAV (GPS) RWY 33

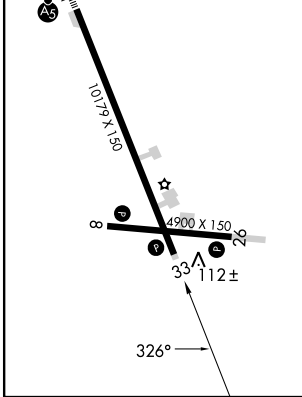
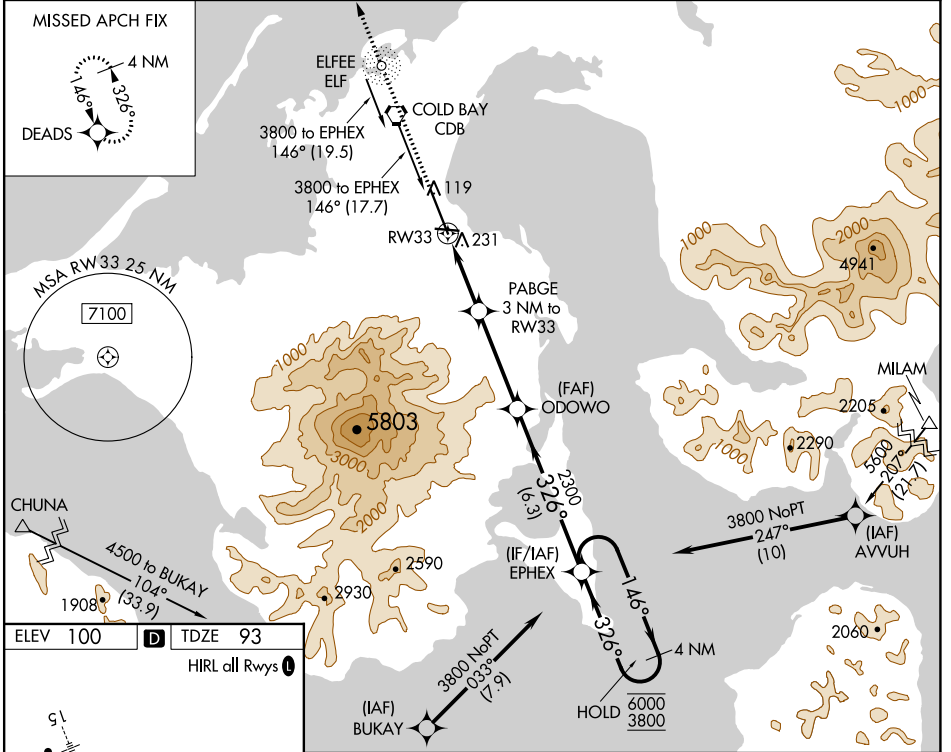
COLD BAY (CDB) (PACD)

RNP APCH.

▼ For uncompensated Baro-VNAV systems, LNAV/VNAV NA below -10°C or above 54°C. Circling NA for Cat A southwest of Rwy 15-33 at night. Circling NA for Cat B/C/D southwest of Rwy 15-33.

MISSED APPROACH: Climb to 3000 direct DEADS and hold.

ASOS 135.75	ANCHORAGE CENTER 118.5 278.3	COLD BAY RADIO 123.6 (CTAF) 0
-----------------------	--	---



3000 DEADS	VGSI and RNAV glidepath not coincident (VGSI Angle 3.00/TCH 36).	EPHEX 4 NM Holding Pattern
↑	PABGE 3 NM to RW33	146° → 6000
*LNAV only	*1.2 NM to RW33	← 326° 3800
↙	RW33	GP 3.00°
↘	1100*	TCH 55
1.2 NM	1.8 NM	3.8 NM
6.3 NM		

CATEGORY	A	B	C	D
LPV DA		293-3/4	200 (200-3/4)	
LNAV/VNAV DA		392-7/8	299 (300-7/8)	
LNAV MDA	500-1	407 (400-1)	500-1 1/8	407 (400-1 1/8)
C CIRCLING	540-1 440 (500-1)	560-1 460 (500-1)	560-1 1/2 460 (500-1 1/2)	860-2 1/2 760 (800-2 1/2)

AK, 16 MAY 2024 to 11 JUL 2024

AK, 16 MAY 2024 to 11 JUL 2024