

SHEMYA I, ALEUTIAN I, ALASKA

RNAV (GPS) RWY 10

APCH CRS	Rwy Idg 10,004
107°	TDZE 98
	Arprt Elev 98

AL-1246 [USAF]

EARECKSON AS (PASY)

RNP APCH

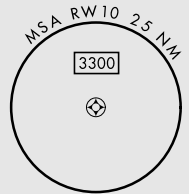
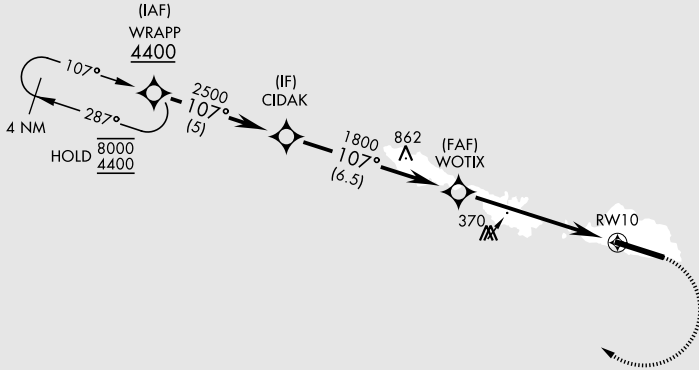
ALSF-1

MISSED APPROACH: Climbing right turn to 4400 direct WRAPP and hold, continue climb-in-hold to 4400.

*When ALS inop, increase CAT CDE vis to 1½ miles.
**Circling NA N of Rwy 10-28.

ANCHORAGE CENTER
119.1 339.8

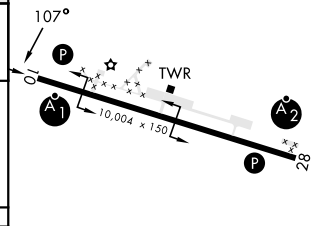
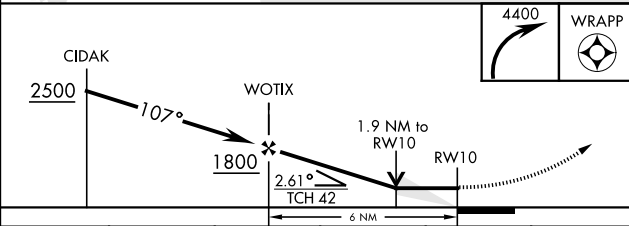
CTAF
127.2 352.05



2280

EMERG SAFE ALT 100 NM 4400

ELEV 98	TDZE 98
---------	---------



CATEGORY	A	B	C	D	E
LNAV MDA *	640-1	542 (600-1)	640-1½	542 (600-1½)	
CIRCLING **	640-1	542 (600-1)	640-1½ 542 (600-1½)	660-2 562 (600-2)	680-2 582 (600-2)

HIRL Rwy 10-28
REIL Rwy 10 and 28

SHEMYA I, ALEUTIAN I, ALASKA

52° 43' N-174° 07' E

EARECKSON AS (PASY)

Orig 02DEC21

RNAV (GPS) RWY 10

AK, 16 MAY 2024 to 11 JUL 2024

AK, 16 MAY 2024 to 11 JUL 2024