

SHEMYA I, ALEUTIAN I, ALASKA

VOR/DME or TACAN RWY 10

| | | |
|--|-------------------------|--|
| VORTAC SYA 109.0 Chan 27 | APCH CRS 092° | Rwy Idg 10,004 TDZE 98 Arpt Elev 98 |
|--|-------------------------|--|

AL-1246 [USAF]

EARECKSON AS (PASY)

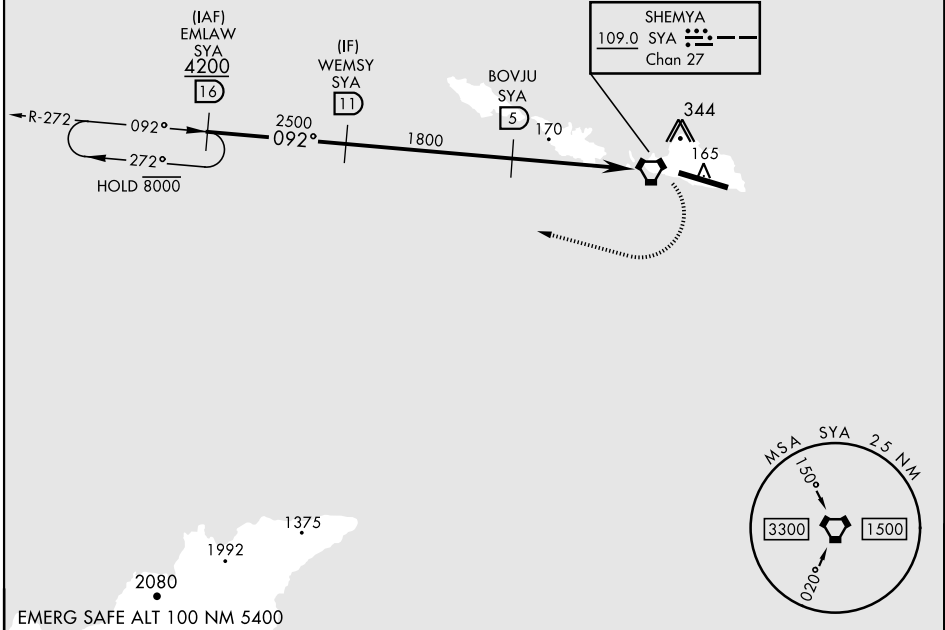
* When ALS inop, increase CAT AB vis to 1½ miles;
CAT CDE vis to 1¼ miles.
** Circling Not Authorized in area N of Rwy 10-28.



MISSED APPROACH: Climb to 1200, then climbing right turn to 4200, intercept SYA R-272 direct EMLAW and hold.

| | |
|--|-------------------------------|
| ANCHORAGE CENTER 119.1 339.8 | CTAF 127.2 352.05 0 |
|--|-------------------------------|

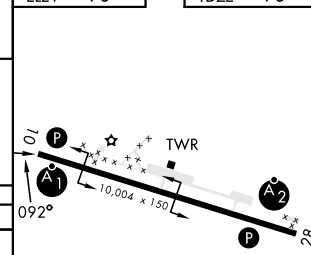
CAUTION: Numerous obstructions in area N of Rwy 10-28.
Missed approach requires use of RNAV or ATC RADAR monitoring.



AK, 16 MAY 2024 to 11 JUL 2024

AK, 16 MAY 2024 to 11 JUL 2024

| | | | | | | | | |
|-------------|--------|--------------|--------|--------------|-------|----------------|--------------------------------------|---------|
| WEMSY 11 | | BOVJU 5 | | VORTAC | | EMLAW R-272 16 | ELEV 98 | TDZE 98 |
| 2500 | | 1800 | | ELVEK 0.8 | | 0.1 | | |
| 092° | | 12.56° | | TCH 42 | | 4.9 NM | | 1.2 NM |
| CATEGORY | A | B | C | D | E | | | |
| S-10 * | 640-1 | 542 (600-1) | 640-1½ | 542 (600-1½) | | | | |
| CIRCLING ** | 640-1½ | 542 (600-1½) | 640-1¾ | 562 (600-2) | 660-2 | 582 (600-2) | HIRL Rwy 10-28 REIL Rwy 10 and 28 | |



SHEMYA I, ALEUTIAN I, ALASKA

52°43'N-174°07'E

EARECKSON AS (PASY)

Amtd 6 02DEC21

VOR/DME or TACAN RWY 10