

NDB/DME ILI 411	APP CRS 006°	Rwy Idg 4800 TDZE 179 Apt Elev 192
Chan 91 (114.4)		

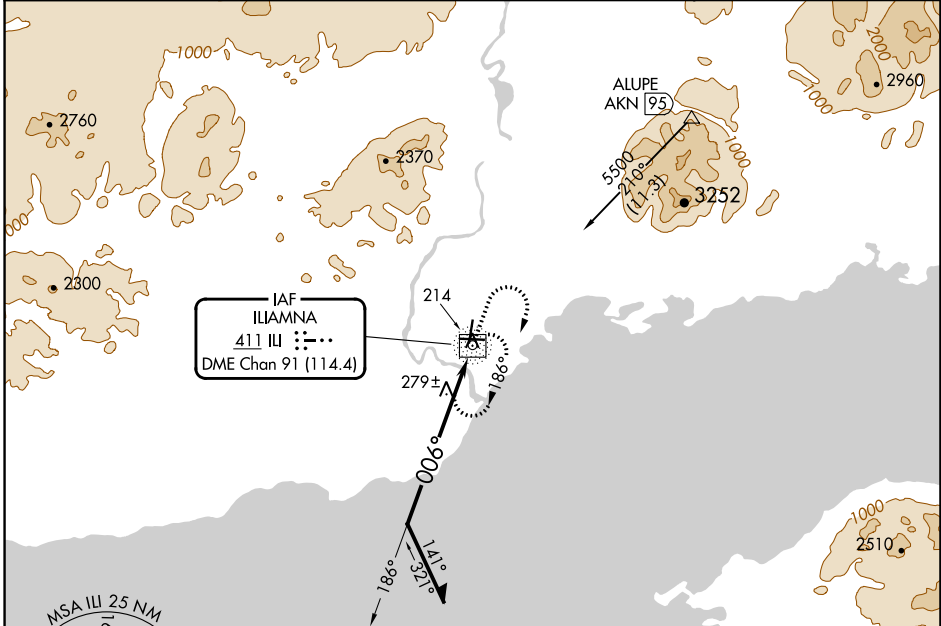
NDB RWY 36

ILIAMNA (ILI) (PAIL)

⚠ Circling Rwy 18 NA at night. Rwy 36 helicopter visibility reduction below 3/4 SM NA. Circling NA to waterways N, S, E, W.
❄ -29°C

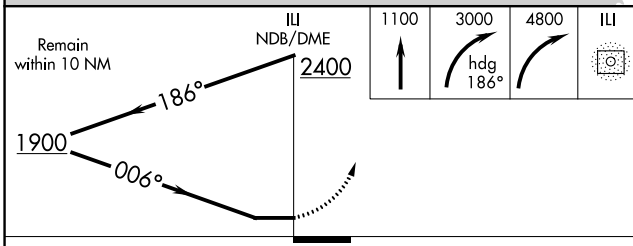
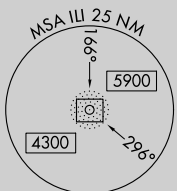
MISSED APPROACH: Climb to 1100 then climbing right turn to 3000 via heading 186° then climbing right turn to 4800 direct ILI NDB/DME and hold, continue climb-in-hold to 4800.

AFIS 134.95	ANCHORAGE CENTER 118.8	ILIAMNA RADIO 123.6 (CTAF) 0
-----------------------	----------------------------------	----------------------------------------



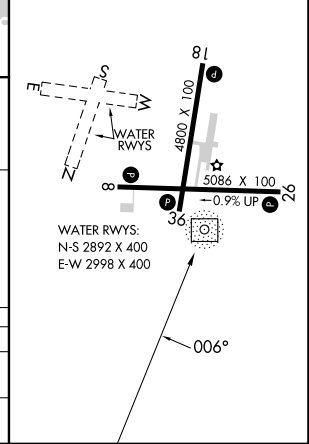
AK, 16 MAY 2024 to 11 JUL 2024

AK, 16 MAY 2024 to 11 JUL 2024



ELEV 192	TDZE 179
----------	----------

REIL Rwy 26 and 36
MIRL Rwy 8-26 and 18-36



CATEGORY	A	B	C	D
S-36	680-1	501 (500-1)	680-1½	501 (500-1½)
C CIRCLING	740-1	548 (600-1)	820-1¾ 628 (700-1¾)	1700-3 1508 (1600-3)