

WAAS CH 45910 W26A	APP CRS 259°	Rwy Idg 5086 TDZE 174 Apt Elev 192
--	------------------------	---

RNAV (GPS) RWY 26

ILIAMNA (ILI) (PAIL)

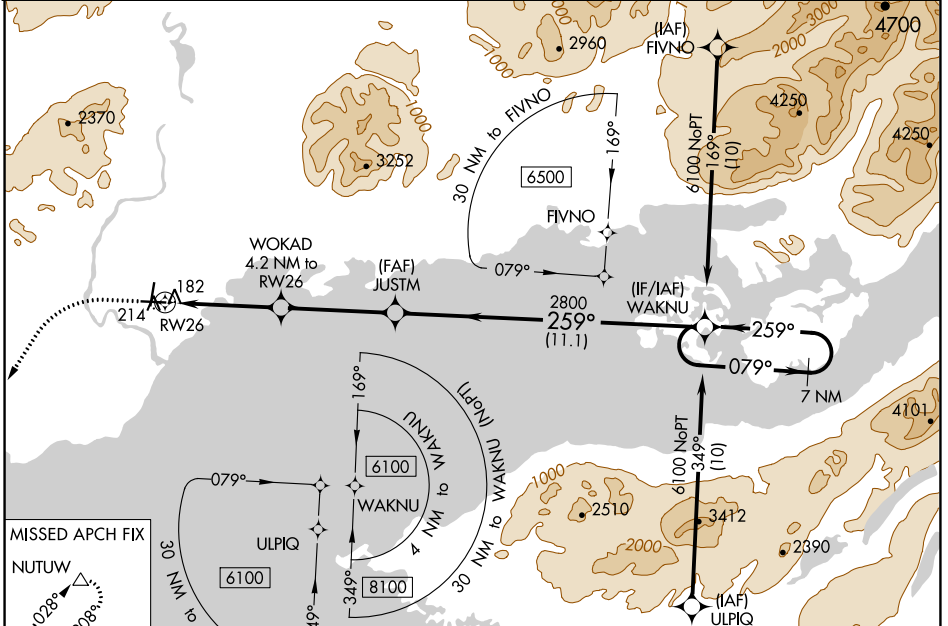
RNP APCH - GPS.

⚠ For uncompensated Baro-VNAV systems, procedure NA below -21°C or above 54°C. When local altimeter setting not received, procedure NA.

❄ -29°C Circling NA to waterways N, S, E, W.

MISSED APPROACH: Climb to 600, then climbing left turn to 7000 direct NUTUW and hold, continue climb-in-hold to 7000.

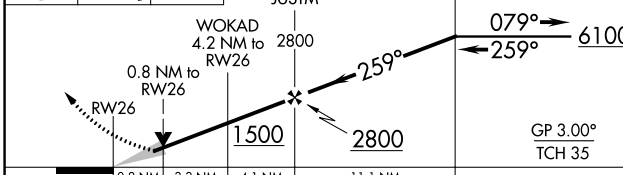
AFIS 134.95	ANCHORAGE CENTER 118.8	ILIAMNA RADIO 123.6 (CTAF)
-----------------------	----------------------------------	--------------------------------------



MISSED APCH FIX NUTUW

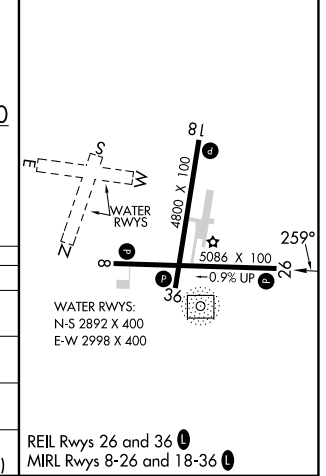
7028
208

7 NM



CATEGORY	A	B	C	D
LPV DA		424-1	250 (300-1)	
LNAV/VNAV DA		424-1	250 (300-1)	
LNAV MDA		440-1	266 (300-1)	
C CIRCLING	740-1	548 (600-1)	820-1¾ 628 (700-1¾)	1700-3 1508 (1600-3)

ELEV 192	TDZE 174
----------	----------



REIL Rwy 26 and 36

MIRL Rwy 8-26 and 18-36

AK, 16 MAY 2024 to 11 JUL 2024

AK, 16 MAY 2024 to 11 JUL 2024