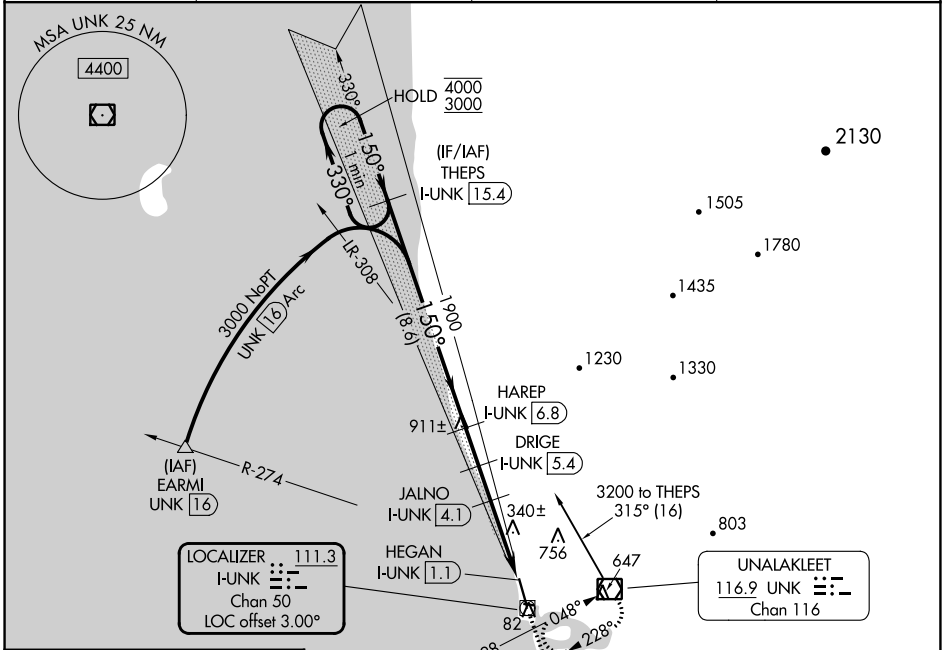


LOC/DME I-UNK 111.3 Chan 50	APP CRS 150°	Rwy Idg TDZE Apt Elev 5900 27 27
--	------------------------	--

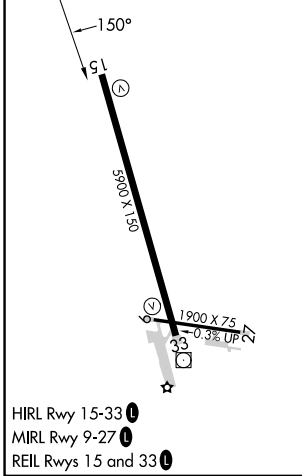
LOC RWY 15

UNALAKLEET (UNK)(PAUN)

DME required.		MISSED APPROACH: Climb to 1900 then climbing right turn to 3400 direct UNK VOR/DME and hold, continue climb-in-hold to 3400.	
AWOS-3P 132.25	ANCHORAGE CENTER 135.7 335.5	NOME RADIO 122.3	CTAF 123.0



ELEV 27	TDZE 27
---------	---------



	THEPS I-UNK 15.4	Use I-UNK DME when on the localizer course.		1900	3400	UNK
One Minute Holding Pattern		HAREP I-UNK 6.8	DRIGE I-UNK 5.4	JALNO I-UNK 4.1	I-UNK 2.5	HEGAN I-UNK 1.1
4000 ← 330°	← 330°	← 150°	← 150°	← 150°	← 150°	← 150°
3000	1900	1440	1020			
	8.6 NM	1.4 NM	1.3 NM	1.6 NM	1.4 NM	
CATEGORY	A	B	C	D		
S-LOC 15	520-1	493 (500-1)	520-1 $\frac{3}{8}$	493 (500-1 $\frac{3}{8}$)		
CIRCLING	600-1 573 (600-1)	700-1 673 (700-1)	700-2 673 (700-2)	900-2 $\frac{3}{4}$ 873 (900-2 $\frac{3}{4}$)		

AK, 16 MAY 2024 to 11 JUL 2024

AK, 16 MAY 2024 to 11 JUL 2024