

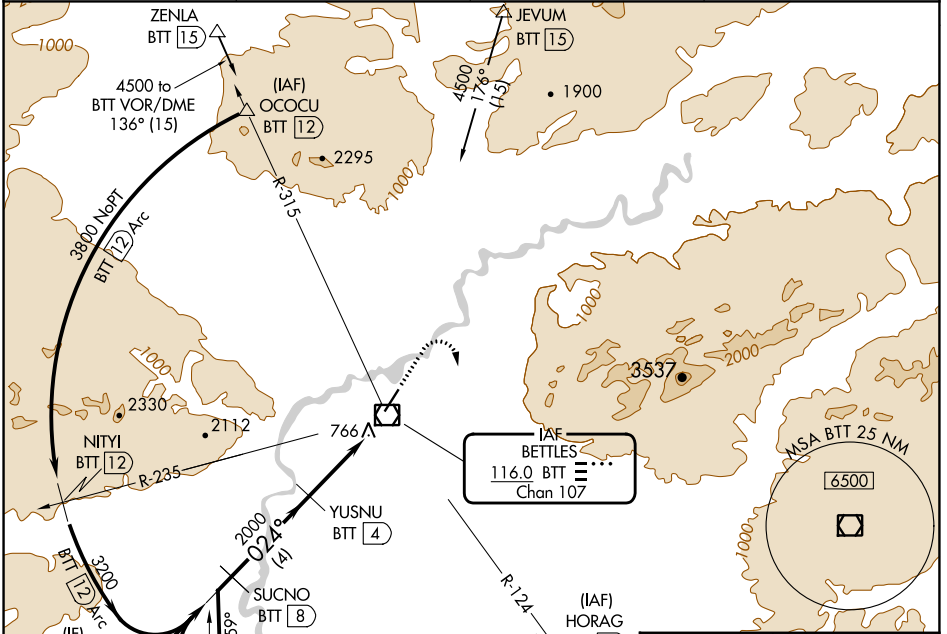
VOR/DME BTT 116.0 Chan 107	APP CRS 024°	Rwy Idg TDZE 642 Apt Elev 647	5190 642 647
--	------------------------	---	---

VOR RWY 2

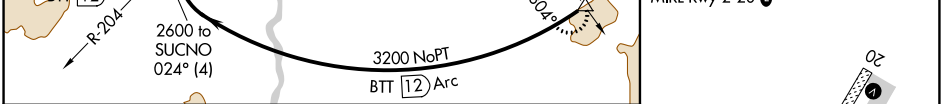
BETTLES (BTT)(PABT)

DME required.	MALS 	MISSED APPROACH: Climbing right turn to 3500 on BTT VOR/DME R-124 to HORAG/BTT 12 DME and hold, continue climb-in-hold to 3500.
Rwy 2 helicopter visibility reduction below 3/4 SM NA. Circling NA east of Rwy 2-20. Inoperative table does not apply to Cats A/B. For inop ALS, increase S-2 Cat C/D visibility to 1 3/4 SM.		

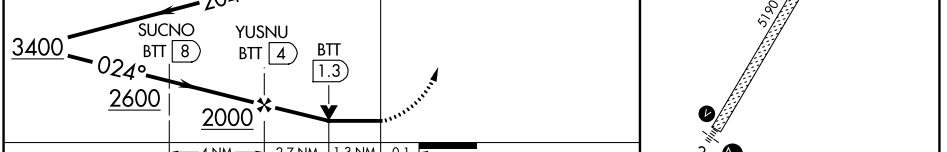
ASOS 135.45	ANCHORAGE CENTER 124.6 352.0	FAIRBANKS RADIO 122.2	CTAF 122.9
-----------------------	--	---------------------------------	----------------------



ELEV 647	TDZE 642
MIRL Rwy 2-20	



Visual Segment - Obstacles.	BTT VOR/DME 6000	3500 BTT R-124	HORAG △
-----------------------------	----------------------------	----------------------	------------



CATEGORY	A	B	C	D
S-2	1100-1	458 (500-1)	1320-2 673 (700-2)	1320-2 1/4 673 (700-2 1/4)
CIRCLING	1100-1	453 (500-1)	1320-2 673 (700-2)	1320-2 1/4 673 (700-2 1/4)

AK, 16 MAY 2024 to 11 JUL 2024

AK, 16 MAY 2024 to 11 JUL 2024