

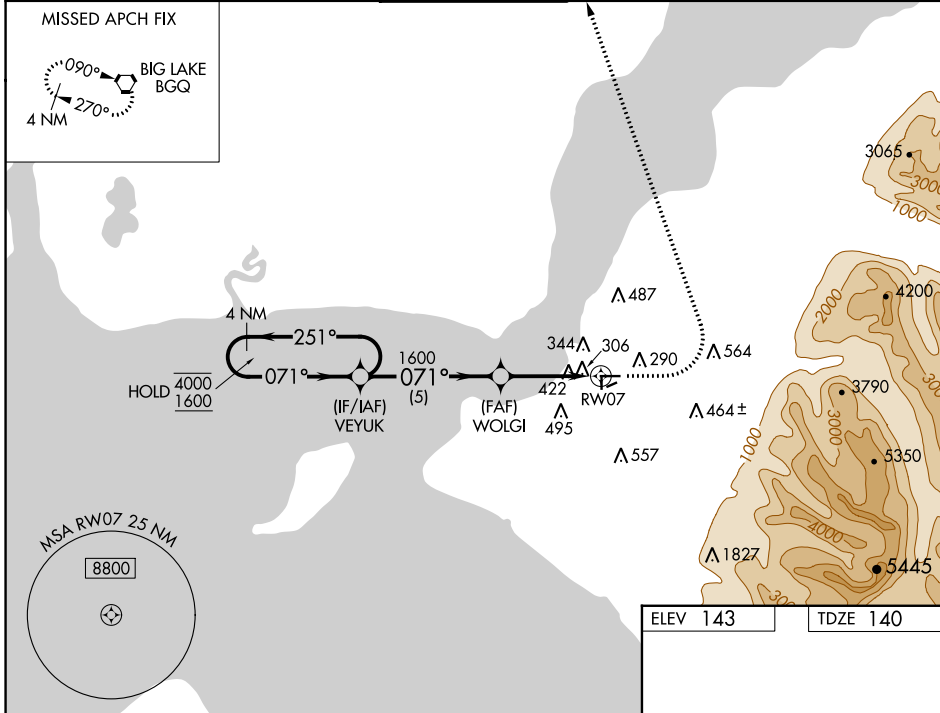
WAAS CH 67473 W07B	APP CRS 071°	Rwy Idg 4000 TDZE 140 Apr Elev 143
--	------------------------	---

RNAV (GPS) Y RWY 7

MERRILL FLD (MRI) (PAMR)

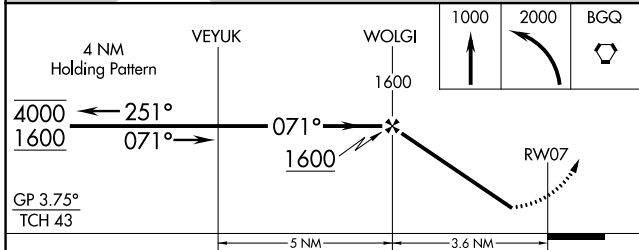
RNP APCH - GPS.		MISSED APPROACH: Climb to 1000 then climbing left turn to 2000 direct BGQ VORTAC and hold.	
RADAR required for procedure entry.			
<p>⚠ When local altimeter setting not received, use Ted Stevens Anchorage Intl altimeter setting and increase LPV DA to 801 feet. Increase all MDAs 20 feet. Helicopter visibility reduction below 1 SM NA. Circling Rwy 16, 34, 5 and 23 NA at night.</p>			

ATIS 124.25	ANCHORAGE APP CON 119.1 363.2	MERRILL TOWER * 126.0 (CTAF) 0	GND CON 121.7	UNICOM 122.95
-----------------------	---	--	-------------------------	-------------------------

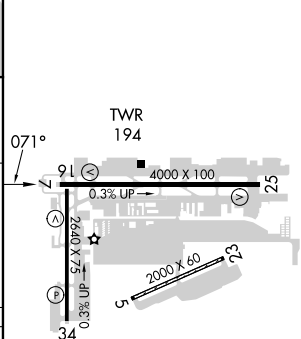


AK, 16 MAY 2024 to 11 JUL 2024

AK, 16 MAY 2024 to 11 JUL 2024



ELEV 143	TDZE 140
----------	----------



GP 3.75° TCH 43	5 NM	3.6 NM	
CATEGORY	A	B	C
LPV DA	788-1 $\frac{7}{8}$	648 (700-1 $\frac{7}{8}$)	NA
RNAV MDA	680-1	540 (600-1)	NA
CIRCLING	740-1 597 (600-1)	800-1 657 (700-1)	NA

REIL Rws 7, 16, 25, and 34
MIRL Rws 7-25 and 16-34