

VOR/DME OTZ 115.7 Chan 104	APP CRS 257°	Rwy Idg TDZE Apt Elev	5900 15 15
--	------------------------	-----------------------------	---------------------------------------

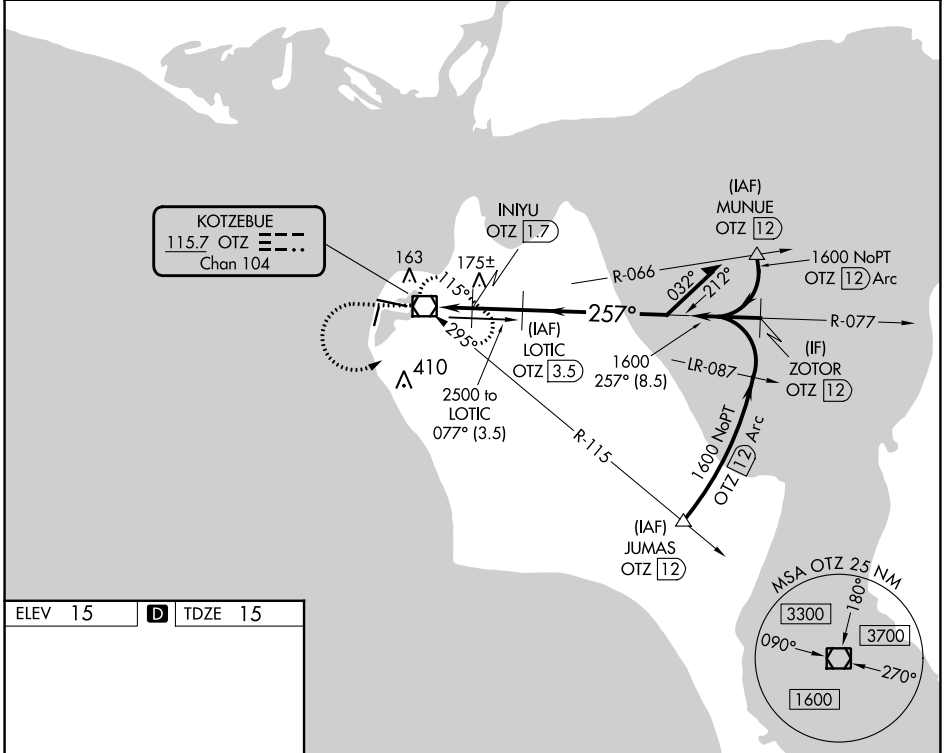
VOR RWY 27
RALPH WIEN MEML (OTZ) (PAOT)

DME required.

▼ Circling to Rwy 18, 36 NA at night. Rwy 27 helicopter visibility reduction below 1 SM NA. Straight-in Rwy 27 at night, Circling Rwy 27 at night, operational VGSI required, remain on or above glidepath until threshold.

MISSED APPROACH: Climb to 1600 then climbing left turn to 2000 direct OTZ VOR/DME and hold, continue climb-in-hold to 2000.

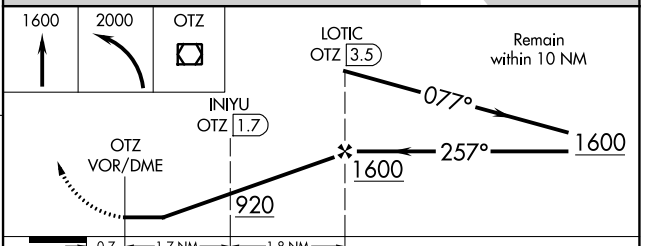
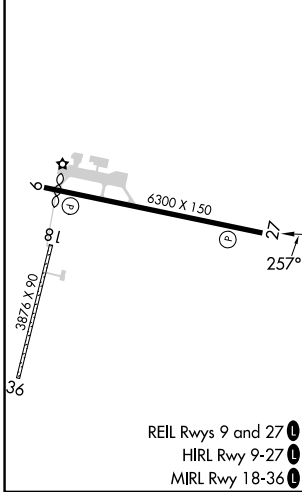
AFIS 135.45	ANCHORAGE CENTER 119.2 263.0	KOTZEBUE RADIO 123.6 (CTAF) 0
-----------------------	--	---



AK, 16 MAY 2024 to 11 JUL 2024

AK, 16 MAY 2024 to 11 JUL 2024

ELEV 15	D TDZE 15
---------	------------------



CATEGORY	A	B	C	D
S-27	440-1	425 (500-1)	440-1¼	425 (500-1¼)
C CIRCLING	520-1	505 (600-1)	720-2	720-2¼ 705 (800-2¼)