

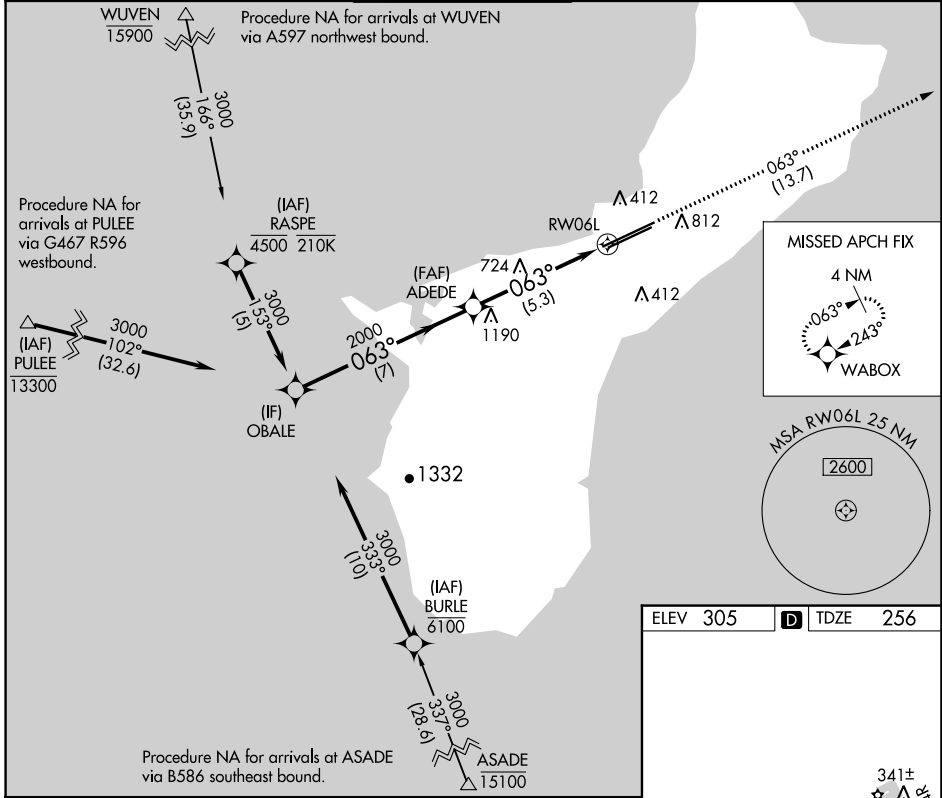
APP CRS <b>063°</b>	Rwy Idg <b>11014</b> TDZE <b>256</b> Apt Elev <b>305</b>
------------------------	--

# RNAV (RNP) Z RWY 6L

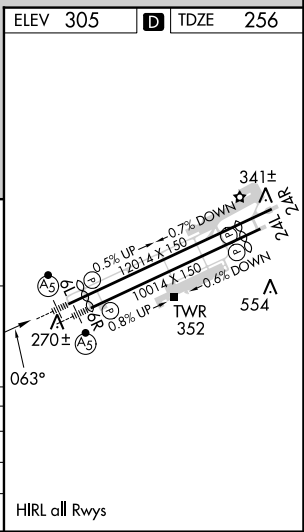
GUAM INTL (GUM)(PGUM)

RNP AR APCH - GPS.		MALS R	MISSED APPROACH: Climb to 3000 via track 063° to WABOX and hold.
<p>▼ For uncompensated Baro-VNAV systems, procedure NA below 19°C or above 48°C. For inop ALS, increase RNP *0.30 all Cats visibility to ¾ SM and RNP 0.30 all Cats visibility to 1½ SM.</p> <p>*Missed approach requires a minimum climb of 276 feet per NM to 1400.</p>			

ATIS <b>119.0</b>	GUAM CERAP <b>119.8 269.0</b>	AGANA TOWER <b>118.1 340.2</b>	GND CON <b>121.9 336.4</b>	CLNC DEL <b>121.9</b>
----------------------	----------------------------------	-----------------------------------	-------------------------------	--------------------------



Procedure Turn NA	OBAL	VGSI and RNAV glidepath not coincident (VGSI Angle 3.00/TCH 73)	3000	WABOX
GP 3.00° TCH 50	3000	ADEDE	2000	
	7 NM		5.3 NM	
CATEGORY	A	B	C	D
RNP 0.30* DA		514-1/2	258 (300-1/2)	
RNP 0.30 DA		656-5/8	400 (400-5/8)	



PAC, 16 MAY 2024 to 11 JUL 2024

PAC, 16 MAY 2024 to 11 JUL 2024

**AUTHORIZATION REQUIRED**

HIRL all Rwys