


APP CRS	Rwy Idg	<b>10014</b>
<b>063°</b>	TDZE	<b>258</b>
	Apt Elev	<b>305</b>

# RNAV (RNP) Z RWY 6R

GUAM INTL (GUM)(PGUM)

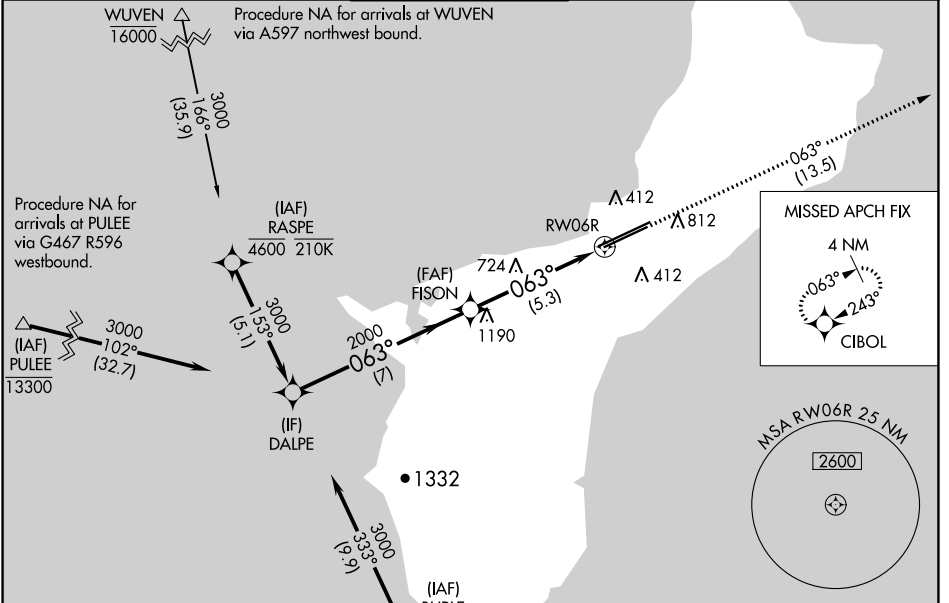
RNP AR APCH - GPS.

▼ For uncompensated Baro-VNAV systems, procedure NA below 19°C or above 48°C. For inop ALS, increase RNP 0.30 all Cats visibility to 1½ SM. Inop table does not apply to RNP 0.30.\*  
 \*Missed approach requires a minimum climb of 285 feet per NM to 1400.

MALSR 

MISSED APPROACH: Climb to 3000 via track 063° to CIBOL and hold.

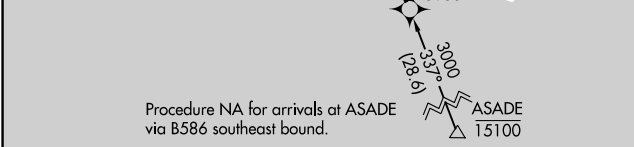
ATIS	GUAM CERAP	AGANA TOWER	GND CON	CLNC DEL
<b>119.0</b>	<b>119.8 269.0</b>	<b>118.1 340.2</b>	<b>121.9 336.4</b>	<b>121.9</b>



PAC, 16 MAY 2024 to 11 JUL 2024

PAC, 16 MAY 2024 to 11 JUL 2024

ELEV 305	<b>D</b> TDZE 258
----------	-------------------



341±

0.5% UP, 0.7% DOWN

12014 X 150

10014 X 150

0.8% UP, 0.6% DOWN

TWR 352

554

270±

063°

HIRL all Rwys

Procedure Turn NA	DALPE	VGSi and RNAV glidepath not coincident (VGSi Angle 3.00/TCH 76).		3000	CIBOL
		FISON		2000	
				tr 063°	
CATEGORY	A	B	C	D	
RNP 0.30* DA		511-¾	253 (300-¾)		
RNP 0.30 DA		656-¾	398 (400-¾)		
<b>AUTHORIZATION REQUIRED</b>					