

APP CRS	Rwy Idg	10014
063°	TDZE	258
	Apt Elev	305

RNAV (GPS) Y RWY 6R

GUAM INTL (GUM)(PGUM)

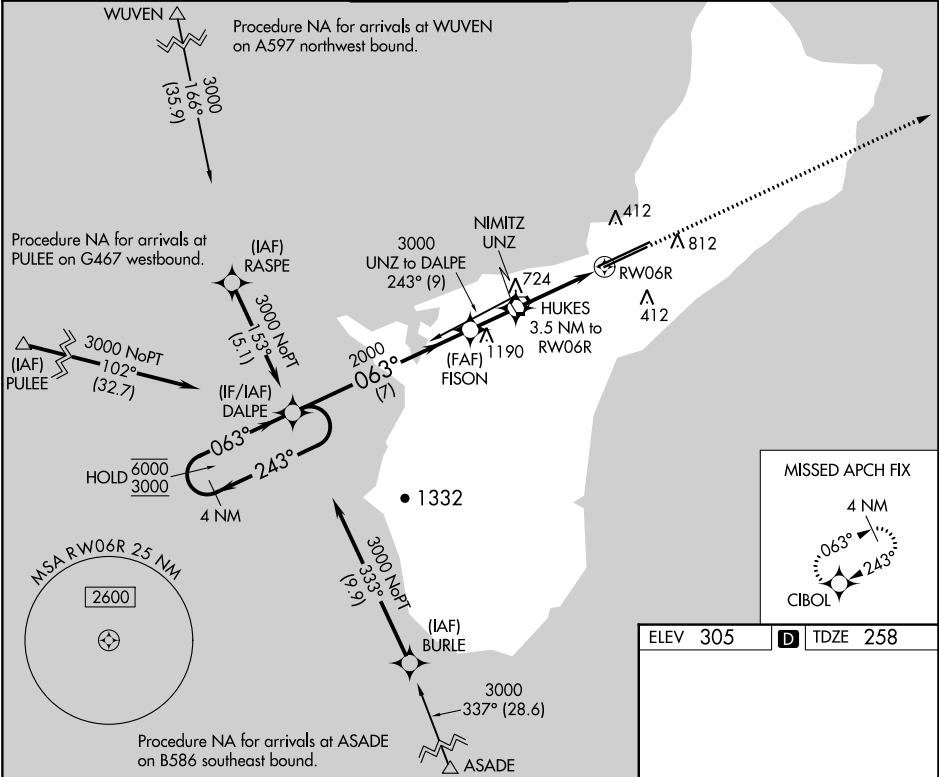
RNP APCH - GPS.

▼ Rwy 6R helicopter visibility reduction below 3/4 SM NA. For inop ALS, increase Cat A and B visibility to 1 SM, and Cat C and D to 2 SM. Circling NA southeast of Rwy 6R-24L.

MALSR 

MISSED APPROACH: Climb to 3000 direct CIBOL and hold.

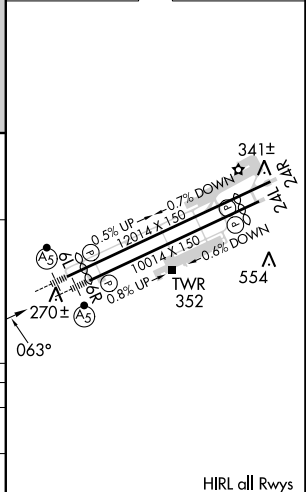
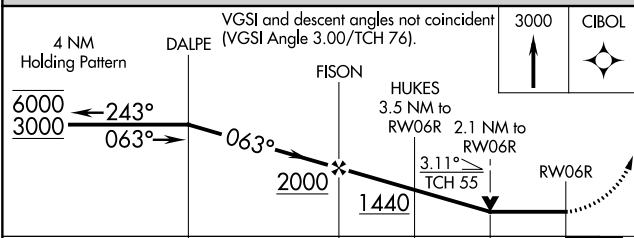
ATIS	GUAM CERAP	AGANA TOWER	GND CON	CLNC DEL
119.0	119.8 269.0	118.1 340.2	121.9 336.4	121.9



PAC, 16 MAY 2024 to 11 JUL 2024

PAC, 16 MAY 2024 to 11 JUL 2024

ELEV 305 **D** TDZE 258



CATEGORY	A	B	C	D
LNVA MDA	980-3/4 722 (700-3/4)		980-1 5/8 722 (700-1 5/8)	
C CIRCLING	980-1 675 (700-1)		980-2 675 (700-2)	NA

HIRL all Rwys