

WAKE ISLAND, WAKE ISLAND

RNAV (GPS) RWY 10

| | | |
|-------------|-----------|-------------|
| APCH CRS | Rwy Idg | 9844 |
| 096° | TDZE | 23 |
| | Arpt Elev | 23 |

- (USAF)

WAKE ISLAND AFLD (PWAJ)

RNP APCH-GPS

MISSED APPROACH: Climbing to 4000 direct NONEY and hold. Continue climb-in-hold to 4000.

✘ * Circling not authorized N of Rwy 10-28.

WAKE OPS
128.0 349.4

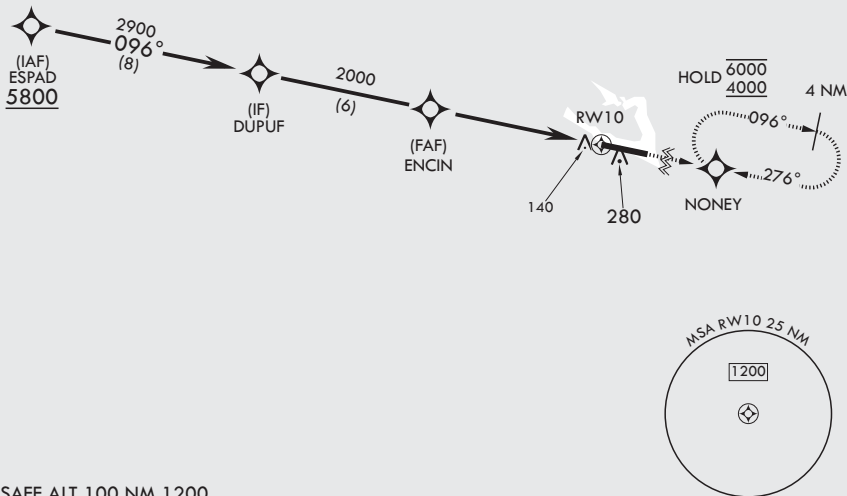
CAUTION: Procedure in uncontrolled airspace. Uncontrolled airspace below 5500' AGL.

Contact Wake Island Operations for advisory services.

CAUTION: When circling to Rwy 28 at night, operational VGSI required, remain on or above VGSI glidepath until threshold.

When VGSI inop, procedure not authorized at night.

USAF only: when VGSI inop, straight-in Rwy 10 authorized at night with MAJCOM A3 approval.



EMERG SAFE ALT 100 NM 1200

| | | | | | | |
|--------------|--|----------------------|------------------------|------------------|-------------|---------|
| DUPUF | VGSI and descent angles not coincident (VGSI angle 3.00/TCH 76). | TA 5500 | 4000 | NONEY | ELEV 23 | TDZE 23 |
| 2900 | 096° | ENCIN | 2000 | 1.1 NM to RWY 10 | RWY 10 | |
| 3.01° TCH 60 | | | | 6 NM | | |
| CATEGORY | A | B | C | D | E | |
| LNAV MDA | 460-1 | 437 (500-1) | 460-1½ | 437 | (500-1½) | |
| CIRCLING* | 460-1 437 (500-1) | 480-1 457 (500-1) | 480-1½ 457 (500-1½) | 580-2 | 557 (600-2) | |
| | HIRL all Rwys REIL all Rwys | | | | | |

WAKE ISLAND, WAKE ISLAND

19°17'N - 166°38'E

WAKE ISLAND AFLD (PWAJ)

Amdt 3 18APR24
TERPS

RNAV (GPS) RWY 10

PAC, 16 MAY 2024 to 11 JUL 2024

PAC, 16 MAY 2024 to 11 JUL 2024