

WAKE ISLAND, WAKE ISLAND

VOR/DME or TACAN RWY 10

VORTAC AWK 113.5 Chan 82	APCH CRS 086°	Rwy Idg TDZE 23 Arprt Elev 23	9844
--	-------------------------	---	-------------

[USAF]

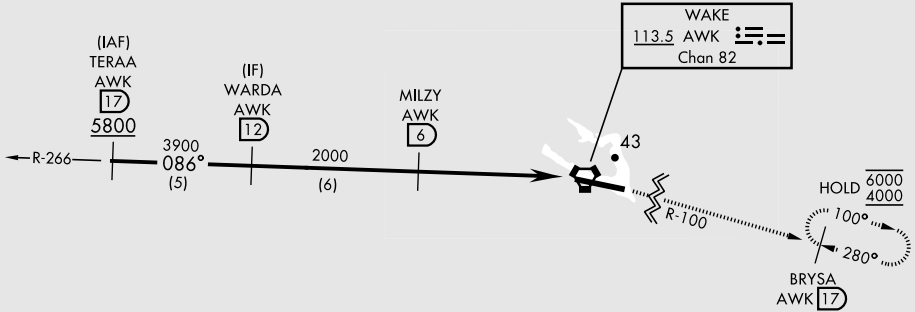
WAKE ISLAND AFLD (PWAK)

RNAV or RADAR required.

▼ * Circling not authorized N of Rwy 10-28.
Visibility reduction by helicopters not authorized.

MISSED APPROACH: Climb to 4000 on AWK VORTAC R-100
direct BRYSA and hold. Continue climb-in-hold to 4000.

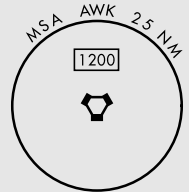
CONTACT WAKE ISLAND OPERATIONS FOR ADVISORY SERVICES
128.0 349.4



When VGSI inop, procedure not authorized at night.
USAF only: when VGSI inop, straight-in Rwy 10
authorized at night with MAJCOM A3 approval.

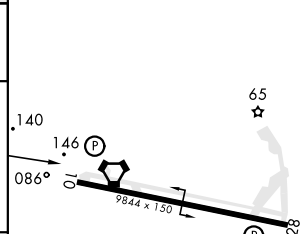
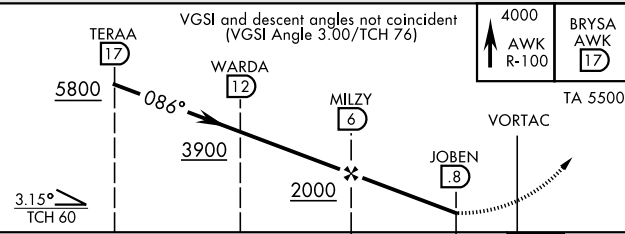
CAUTION: When circling to Rwy 28 at night,
operational VGSI required, remain on or above
VGSI glidepath until threshold.

CAUTION: Procedure in uncontrolled airspace.
Uncontrolled airspace below 5500' AGL.



ELEV 23	TDZE 23
---------	---------

EMERG SAFE ALT 100 NM 1200



CATEGORY	A	B	C	D	E
S-10	460-1 437	(500-1)	460-1 1/4 437	(500-1 1/4)	
C CIRCLING *	460-1 437 (500-1)	480-1 457 (500-1)	480-1 1/2 457 (500-1 1/2)	580-2 557 (600-2)	

HIRL Rwy 10-28
REIL Rwy 10-28

WAKE ISLAND, WAKE ISLAND
Orig 18APR24
TERPS

19°17'N-166°38'E

WAKE ISLAND AFLD (PWAK)

VOR/DME or TACAN RWY 10

PAC, 16 MAY 2024 to 11 JUL 2024

PAC, 16 MAY 2024 to 11 JUL 2024