

WAKE ISLAND, WAKE ISLAND

# VOR/DME or TACAN RWY 28

VORTAC AWK <b>113.5</b> Chan <b>82</b>	APCH CRS <b>280°</b>	Rwy Idg TDZE Arpt Elev	<b>9844</b> <b>20</b> <b>23</b>
--	-------------------------	------------------------------	---------------------------------------

[USAF]

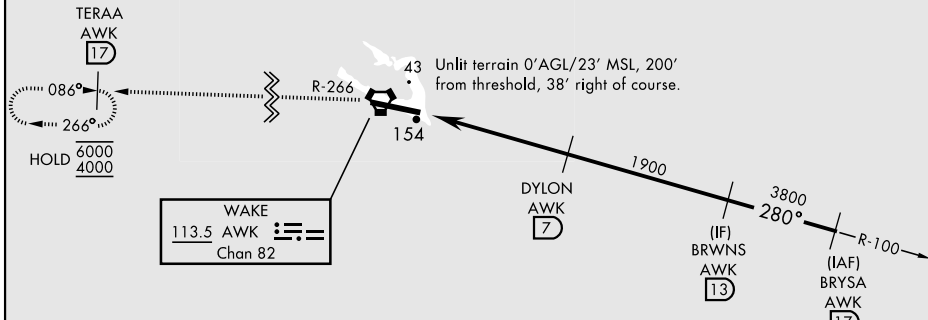
WAKE ISLAND AFLD (PWAK)

RNAV or RADAR required

**∇** \* Circling not authorized N of Rwy 10-28.  
Rwy 28 helicopter visibility reduction below 1 SM not authorized.

MISSED APPROACH: Climbing to 4000 on AWK VORTAC R-266 direct TERAA and hold.

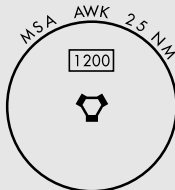
CONTACT WAKE ISLAND OPERATIONS FOR ADVISORY SERVICES  
**128.0 349.4**



Straight-in Rwy 28 at night, operational VGSI required, remain on or above VGSI glidepath until threshold.  
USAF Only: When VGSI inop, straight-in Rwy 28 authorized at night with aircrew command approval.

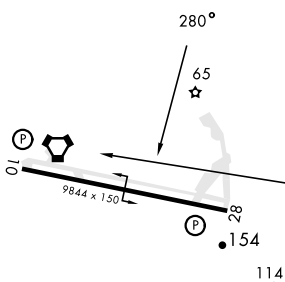
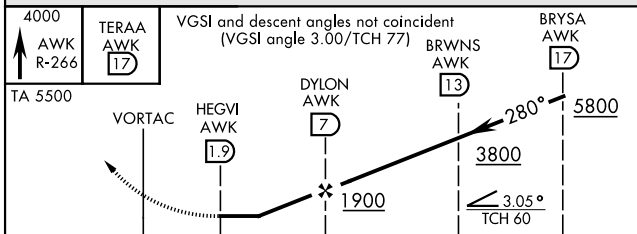
CAUTION: When Rwy 10 VGSI inop, circling to Rwy 10 not authorized at night.

CAUTION: Procedure in uncontrolled airspace. Uncontrolled airspace below 5500' AGL.



ELEV 23	TDZE 20
---------	---------

### EMERG SAFE ALT 100 NM 1200



CATEGORY	A	B	C	D	E
S-28	460-1	440 (500-1)	460-1½	440 (500-1½)	
<b>CIRCLING*</b>	460-1 437 (500-1)	480-1 457 (500-1)	480-1½ 457 (500-1½)	580-2 557 (600-2)	

HIRL Rwy 10-28  
REIL Rwy 10-28

WAKE ISLAND, WAKE ISLAND

19° 17' N-166° 38' E

WAKE ISLAND AFLD (PWAK)

Orig 18APR24  
TERPS

# VOR/DME or TACAN RWY 28

PAC, 16 MAY 2024 to 11 JUL 2024

PAC, 16 MAY 2024 to 11 JUL 2024