

(HMLTN9.HMLTN) 24137

# HAMILTON NINE DEPARTURE

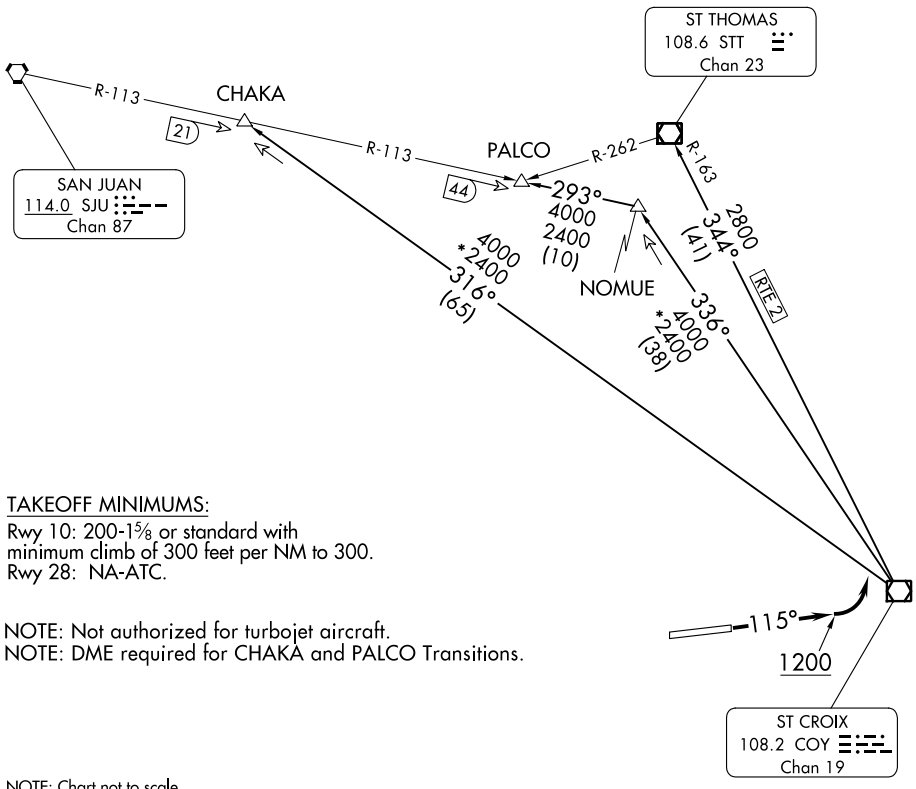
AL-5008 (FAA)

HENRY E ROHLSSEN (STX)(TISX)

CHRISTIANSTED, ST. CROIX, VIRGIN ISLANDS

SAN JUAN CERAP DEP CON  
128.65 279.6  
ATIS 135.65  
GND CON  
121.7  
ST CROIX TOWER \*  
118.6 239.3

**TOP ALTITUDE:  
6000**



### TAKEOFF MINIMUMS:

Rwy 10: 200-1 $\frac{1}{8}$  or standard with minimum climb of 300 feet per NM to 300.  
Rwy 28: NA-ATC.

NOTE: Not authorized for turbojet aircraft.  
NOTE: DME required for CHAKA and PALCO Transitions.

NOTE: Chart not to scale.

### DEPARTURE ROUTE DESCRIPTION

**TAKEOFF RUNWAY 10:** Climb on heading 115° to 1200, then climbing left turn to intercept assigned transition. Maintain 6000 or ATC assigned altitude. Expect further clearance to filed altitude within ten (10) minutes after departure.

**CHAKA TRANSITION (HMLTN9.CHAKA):** From over COY VOR/DME on COY R-316 to CHAKA/SJU 21 DME.

**PALCO TRANSITION (HMLTN9.PALCO):** From over COY VOR/DME on COY R-336 to NOMUE/COY 38 DME, then on SJU R-113 to PALCO INT/SJU 44 DME.

**ST THOMAS TRANSITION (HMLTN9.STT):** From over COY VOR/DME on COY R-344 and STT R-163 to STT VOR/DME.

# HAMILTON NINE DEPARTURE

(HMLTN9.HMLTN) 24MAR22

CHRISTIANSTED, ST. CROIX, VIRGIN ISLANDS

HENRY E ROHLSSEN (STX)(TISX)

SE-3, 13 JUN 2024 to 11 JUL 2024

SE-3, 13 JUN 2024 to 11 JUL 2024