

LOC I-AVA <b>111.3</b>	APCH CRS <b>177°</b>	Rwy ldg <b>12,351</b> TDZE <b>900</b> Arprt Elev <b>911</b>
---------------------------	-------------------------	---

AL-5010 [USAF]

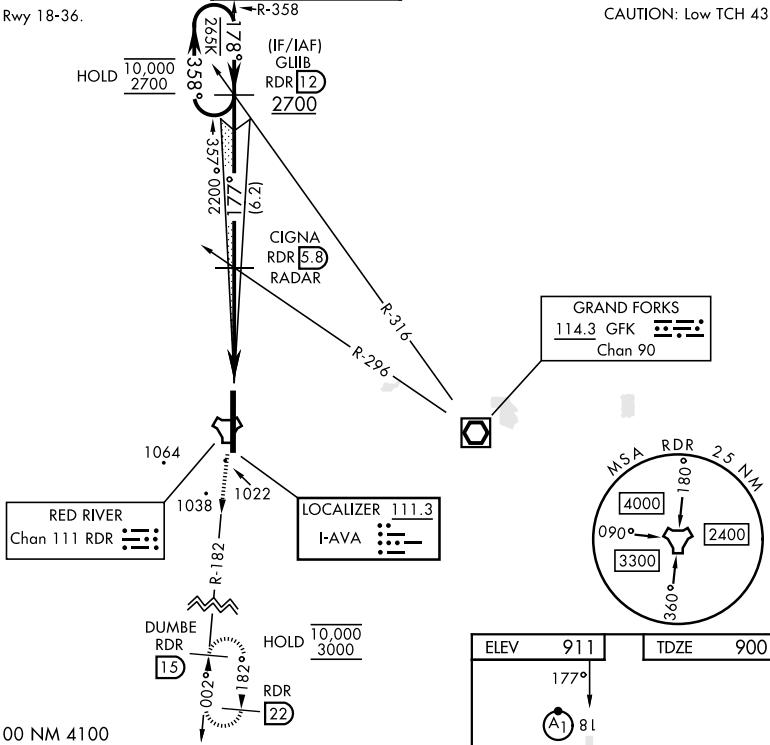
GRAND FORKS AFB (KRDR)

RADAR or DME required.	ALSIF-1 	MISSED APPROACH: Climb to 3000 on RDR TACAN R-182 to DUMBE and hold.
------------------------	-------------	--

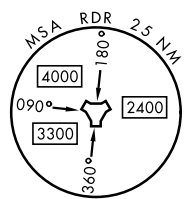
ATIS <b>273.45</b>	APP CON <b>118.1 318.1</b>	RED RIVER TOWER <b>124.9 349.0</b>	GND CON <b>119.15 275.8</b>	CLNC DEL <b>119.15 360.7</b>
-----------------------	-------------------------------	---------------------------------------	--------------------------------	---------------------------------

\*\*\*Circling NA E of Rwy 18-36.

CAUTION: Low TCH 43



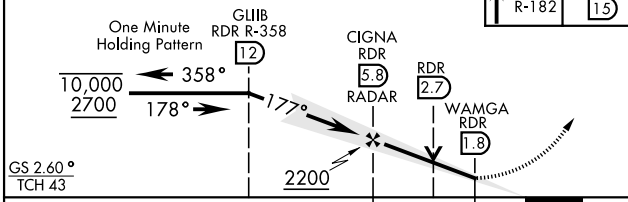
GRAND FORKS  
114.3 GFK  
Chan 90



1339  
EMERG SAFE ALT 100 NM 4100

VGSI and ILS glidepath not coincident  
(VGSI Angle 2.60/TCH 48).

3000 RDR R-182  
DUMBE RDR 15



GS 2.60° TCH 43

ELEV 911	TDZE 900
----------	----------

Vertical profile diagram showing elevation 911, TDZE 900, and various symbols for HIRL Rwy 18-36. The diagram includes a 177° glide slope, a 12,351 x 150 ft runway, and a 36 MSL obstacle.

FAF to MAP 4.1 NM					
Knots	60	90	120	150	180
Min:Sec	4:06	2:44	2:03	1:38	1:22

CATEGORY	A	B	C	D	E
S-ILS 18*	1100/24		200	(200-½)	
S-LOC 18**	1340/24	440 (500-½)	1340/40	440	(500-¾)
CIRCLING***	1340-1 429 (500-1)	1380-1 469 (500-1)	1380-1½ 469 (500-1½)	1540-2 629 (700-2)	1560-2¼ 649 (700-2¼)

NC-1, 13 JUN 2024 to 11 JUL 2024

NC-1, 13 JUN 2024 to 11 JUL 2024