

GRAND FORKS, NORTH DAKOTA

ILS or LOC RWY 36

LOC I-RDR 109.9	APCH CRS 357°	Rwy Idg 12,351 TDZE 911 Arprt Elev 911
---------------------------	-------------------------	---

AL-5010 [USAF]

GRAND FORKS AFB (KRDR)

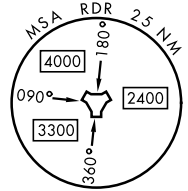
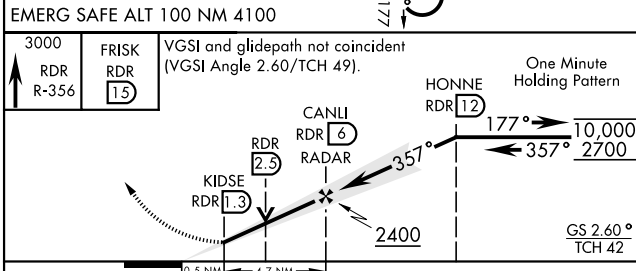
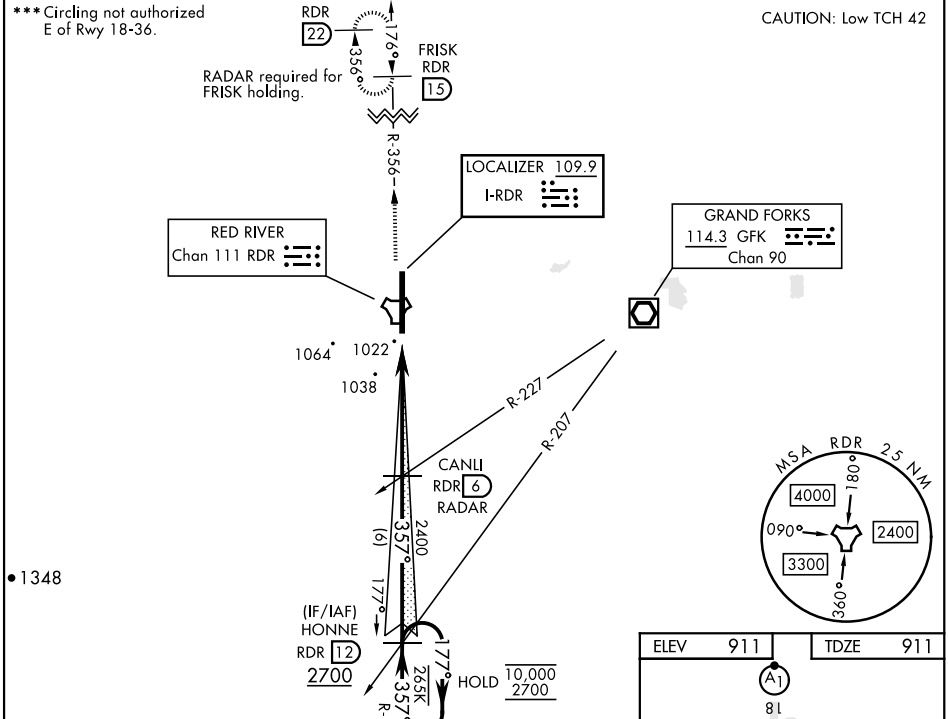
RADAR or DME required.

* When ALS inop, increase RVR to 40 and vis to 3/4 mile.
 ** When ALS inop, increase CAT AB RVR to 55 and vis to 1 mile, CAT CDE vis to 1 1/2 miles.

ALSF-1

MISSED APPROACH: Climb to 3000 on RDR TACAN R-356 to FRISK and hold.

ATIS 273.45	APP CON 118.1 318.1	RED RIVER TOWER 124.9 349.0	GND CON 119.15 275.8	CLNC DEL 119.15 360.7
-----------------------	-------------------------------	---------------------------------------	--------------------------------	---------------------------------



ELEV 911	TDZE 911
FAF to MAP 4.7 NM	
Knots	60 90 120 150 180
Min:Sec	4:42 3:08 2:21 1:53 1:34

CATEGORY	A	B	C	D	E
S-ILS 36 *	1111/24		200	(200-1/2)	
S-LOC 36 **	1440/24	529 (600-1/2)	1440/55	529	(600-1)
CIRCLING ***	1440-1	529 (600-1)	1440-1 1/2 529 (600-1/2)	1540-2 629 (700-2)	1560-2 1/4 649 (700-2 1/4)

GRAND FORKS, NORTH DAKOTA 47°58'N-97°24'W GRAND FORKS AFB (KRDR)

Orig 02NOV23

ILS or LOC RWY 36

NC-1, 13 JUN 2024 to 11 JUL 2024

NC-1, 13 JUN 2024 to 11 JUL 2024